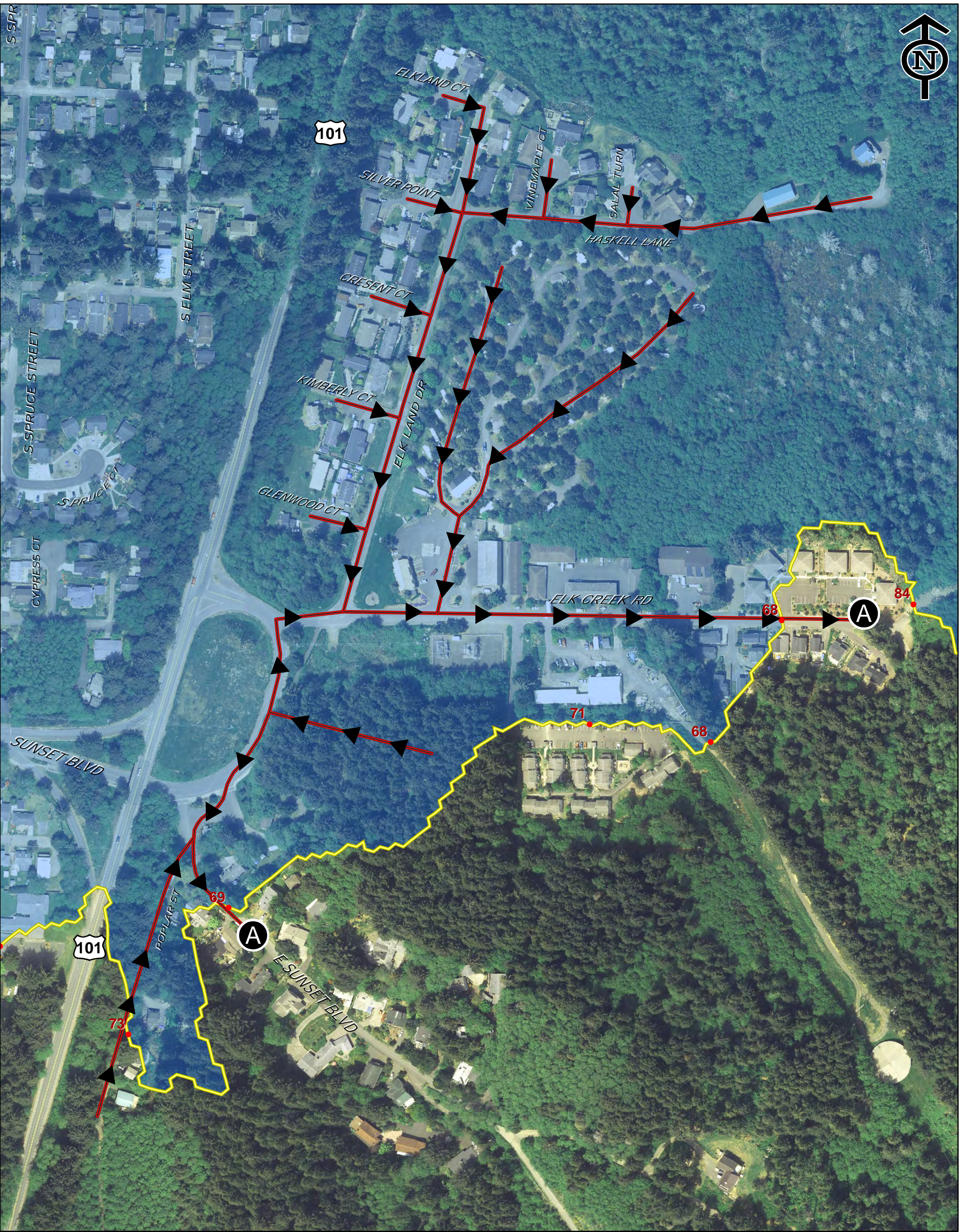


Tsunami Evacuation: Pedestrian Route

Midtown East

ER-6



Tsunami Evacuation Pedestrian Map Legend

- Local Cascadia Earthquake and Tsunami Evacuation zone for a local tsunami from an earthquake at the Oregon coast.
 - Tsunami Inundation Zone
 - Spot Elevation
- 0 125 250 500 Feet

- #### Pedestrian Features
- Pedestrian Evacuation Route
 - Assembly Area
 - Assumed Safe Areas
Move to primary assembly area as soon as possible
 - Information

City of Cannon Beach, Oregon

163 E. Gower Ave
Cannon Beach, OR
97110
General Information Call: 503-436-1581
Office Hours 8 - 5 Monday - Friday

This map was made on July 7, 2015

