



PACIFIC HABITAT SERVICES, INC

9450 SW Commerce Circle, Suite 180
Wilsonville, OR 97070

(800) 871-9333 • (503) 570-0800 • Fax (503) 570-0855

September 1, 2021

Patrick/Dave, LLC
Patrick Gemma and Dave Pietka
pgemma@prologis.com
dpietka@msn.com

**In Re: Stormwater influence on southern portion of Tax Lot 4100 on Forest Lawn Drive,
Cannon Beach
PHS project number: 6978**

Dear Patrick and Dave:

In 1999, Pacific Habitat Services, Inc. (PHS) conducted a wetland delineation within tax lot 4100. The attached Figure 5 shows the results of that wetland delineation. We revisited the property in December 2020 to re-delineate the property, which is shown on Figure 6. In general, the location of the wetlands did not significantly change, however, we did observe additional wetlands in the southwest portion of the property.

Wetland delineations need to be updated every five years because it is assumed that hydrologic conditions can change. To underscore this, when we updated the wetland delineation in 2020, it was obvious that stormwater flowing from a downspout attached to a new house to the south of the lot had created additional wetlands within Tax Lot 4100. In addition to the downspout, water is running into the property from a catch basin on Forest Lawn Road, which is also in the southwest corner of the property.

Although we know there is a shallow groundwater table associated with the wetland, its hydrology is being augmented by stormwater runoff flowing from developed areas to south and southwest. This is patently clear when comparing the additional wetland discovered in 2020 and the stormwater runoff from the downspout. It is highly recommended that all stormwater flows from adjacent developed areas be piped around the wetland. In the future, an updated wetland delineation should occur to document any changes to the wetland boundary.

Let me know if you have any questions.

Thanks

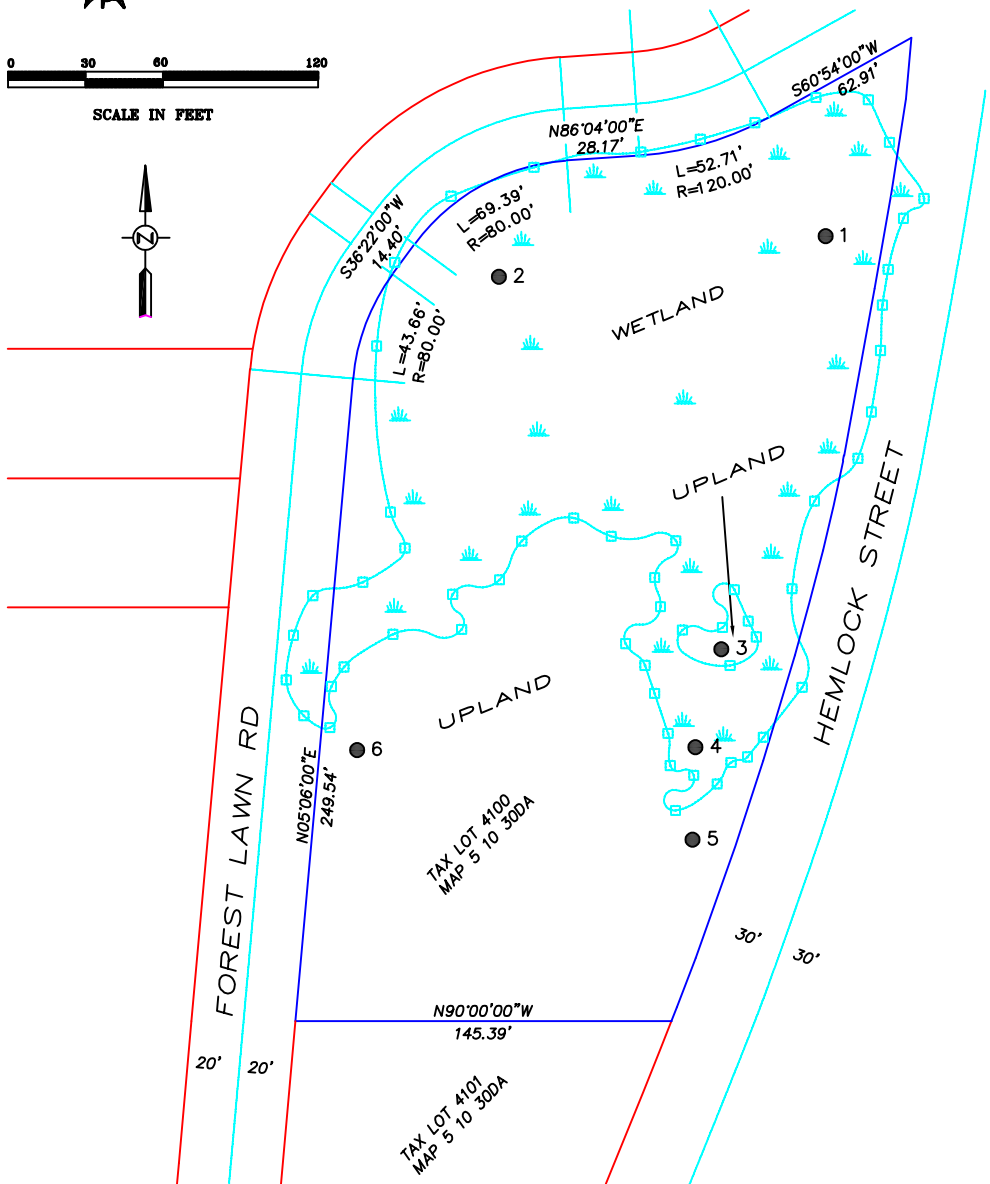
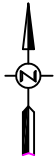
Sincerely,

John van Staveren, SPWS
Project Manager



0 30 60 120

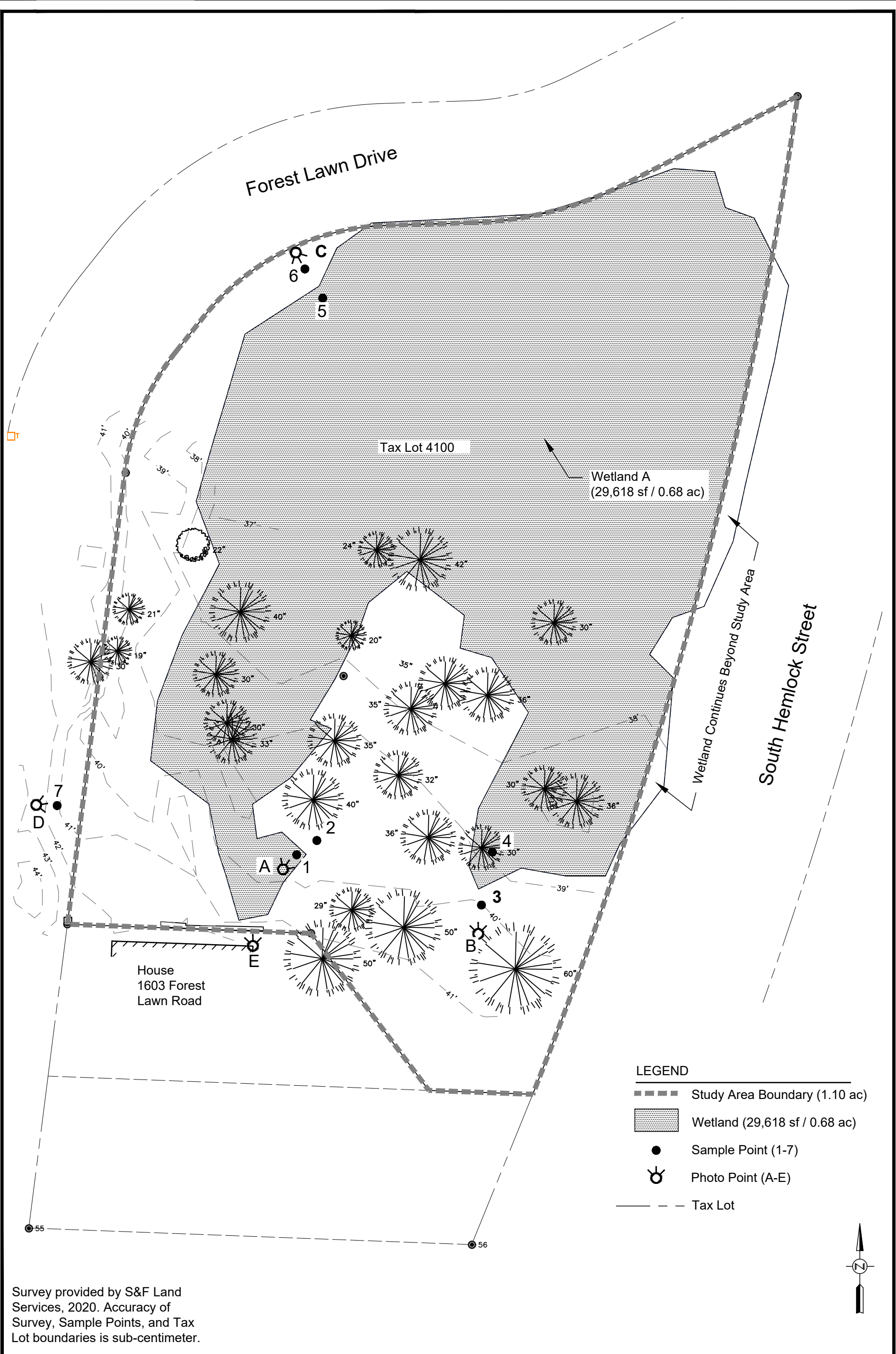
SCALE IN FEET



7/22/99

8-1680

Figure 5: Location of potentially jurisdictional wetlands and sample points for the Forest Lawn Road property in Cannon Beach, Oregon (base map supplied by HLB & Associates).



Wetland Delineation
Tax Lot 4100 - Cannon Beach, Oregon

FIGURE
6

3-19-2021