


1981 Pacific Ave, Cannon Beach OR



Account 6440

- Property Details
- Improvements
- Assessments
- Sales History
- Taxes
- Payments
- Documents

General Information

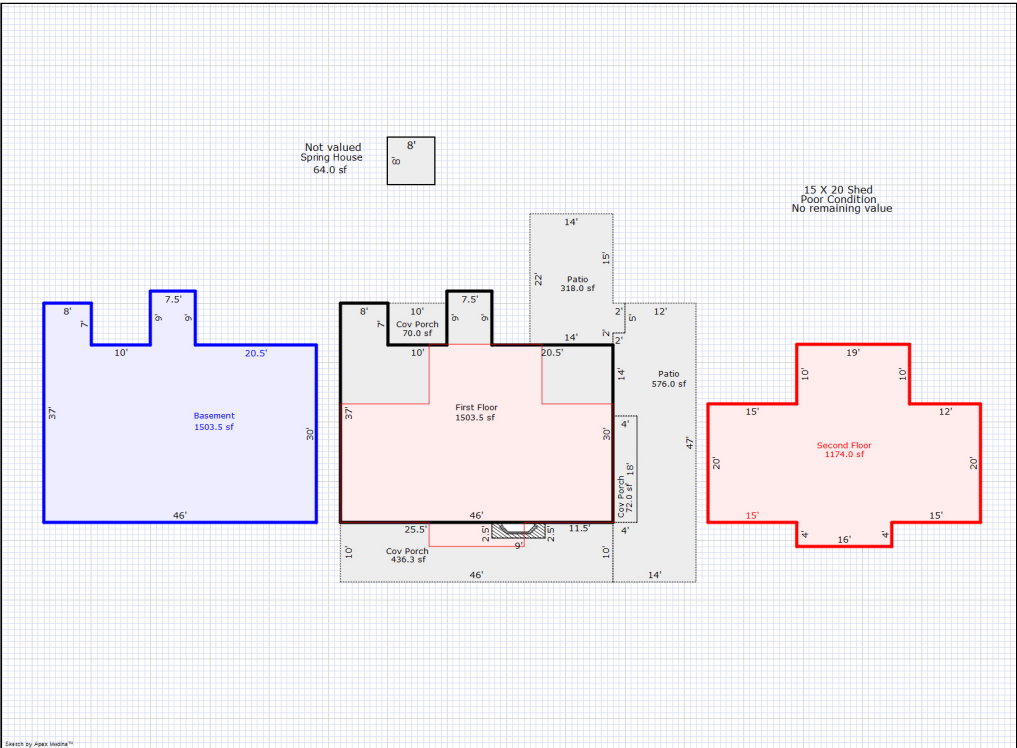
Property Address	 1981 Pacific Ave, Cannon Beach OR
Legal Description	 TOLOVANA PARK LT 8 THRU 12, 14, 15 BLK 1, EXC HWY ON LT 8 & 15
Account ID	 6440
Tax Map Key	 51031AA00500
Size in Acres	 0.88
Property Status	 Active
Property Type	 Real Property Residential Improved Residential Land

Owner Information

Owner Name	 Haystack Rock LLC
Mailing Address	 4332 SW Semler Way Portland OR 97221
	→ Request Change of Address
	→ Sign up for e-Statements

Year Built	Sq Ft	Type	Stories
1994	4180	Single Family	1.2

Type	Sq Ft	Bedrooms	Bathrooms
Attic	1174	4	2
Basement	1503	0	0
First Floor	1503	0	0.5



Year	Land Value	Improvements Value	Real Market Value	Assessed Value
2020	\$1,822,661.00	\$529,760.00	\$2,352,421.00	\$2,259,535.00
2019	\$1,804,615.00	\$528,000.00	\$2,332,615.00	\$2,193,724.00
2018	\$1,702,465.00	\$501,461.00	\$2,203,926.00	\$2,129,830.00
2017	\$1,621,397.00	\$480,714.00	\$2,102,111.00	\$2,067,797.00
2016	\$1,654,487.00	\$493,720.00	\$2,148,207.00	\$2,007,570.00
2015	\$1,477,221.00	\$443,676.00	\$1,920,897.00	\$1,920,897.00
2014	\$1,567,940.00	\$792,751.00	\$2,360,691.00	\$1,949,098.00
2013	\$1,567,940.00	\$758,405.00	\$2,326,345.00	\$1,892,329.00
2012	\$1,823,187.00	\$553,581.00	\$2,376,768.00	\$1,837,213.00
2011	\$1,823,187.00	\$553,581.00	\$2,376,768.00	\$1,783,703.00
2010	\$2,250,848.00	\$589,106.00	\$2,839,954.00	\$1,731,751.00
2009	\$2,648,056.00	\$1,202,259.00	\$3,850,315.00	\$1,681,312.00
2008	\$2,521,958.00	\$1,254,596.00	\$3,776,554.00	\$1,632,343.00
2007	\$2,251,748.00	\$1,098,784.00	\$3,350,532.00	\$1,584,800.00
2006	\$1,596,985.00	\$785,644.00	\$2,382,629.00	\$419,730.00
2005	\$1,478,685.00	\$727,305.00	\$2,205,990.00	\$419,730.00
2004	\$1,320,255.00	\$542,765.00	\$1,863,020.00	\$419,730.00
2003	\$1,281,801.00	\$364,272.00	\$1,646,073.00	\$419,730.00
2002	\$1,165,274.00	\$316,759.00	\$1,482,033.00	\$419,730.00
2001	\$1,099,316.00	\$259,639.00	\$1,358,955.00	\$419,730.00
2000	\$1,099,316.00	\$405,687.00	\$1,505,003.00	\$412,781.00
1999	\$1,133,316.00	\$418,235.00	\$1,551,551.00	\$400,760.00
Sales Date	Instrument ID		Sale Amount	
July 18, 2008	200807231		\$932,226.25	
July 18, 2008	200807230		\$1,625,737.00	

Tax Year	Total Billed	Interest	Discount	Total Due
2020	\$25,703.67	\$0.00	\$-771.11	\$24,932.56
2019	\$24,356.61	\$0.00	\$0.00	\$0.00
2018	\$22,747.10	\$0.00	\$0.00	\$0.00
2017	\$21,660.13	\$0.00	\$0.00	\$0.00
2016	\$18,987.34	\$0.00	\$0.00	\$0.00
2015	\$17,280.97	\$0.00	\$0.00	\$0.00
2014	\$19,153.61	\$0.00	\$0.00	\$0.00
2013	\$18,588.16	\$0.00	\$0.00	\$0.00
2012	\$18,871.84	\$0.00	\$0.00	\$0.00
2011	\$18,712.82	\$0.00	\$0.00	\$0.00
2010	\$18,030.29	\$0.00	\$0.00	\$0.00
2009	\$17,673.12	\$0.00	\$0.00	\$0.00
2008	\$17,102.22	\$0.00	\$0.00	\$0.00
2007	\$16,680.66	\$0.00	\$0.00	\$0.00
2006	\$4,075.26	\$0.00	\$0.00	\$0.00
2005	\$4,048.85	\$0.00	\$0.00	\$0.00
2004	\$3,934.19	\$0.00	\$0.00	\$0.00
2003	\$3,894.99	\$0.00	\$0.00	\$0.00
2002	\$3,901.12	\$0.00	\$0.00	\$0.00
2001	\$4,026.03	\$0.00	\$0.00	\$0.00
2000	\$4,469.88	\$0.00	\$0.00	\$0.00
1999	\$4,034.58	\$0.00	\$0.00	\$0.00
1998	\$4,016.24	\$0.00	\$0.00	\$0.00

View Your Current Statement

Total Taxes Due as of November 5, 2020 ?

Current Year Due	\$24,932.56
Past Year Due	\$0.00
Total Due	\$24,932.56

By clicking "Pay Your Bill" below, you agree that you have read our [Important Notes](#) regarding fees.

Pay Your Bill

Tax Year	Receipt No	Date Posted	Amount Paid
2019	615574	November 15, 2019	\$23,625.91
2018	597583	November 15, 2018	\$22,064.69
2017	576343	November 15, 2017	\$21,010.33
2016	557046	November 15, 2016	\$18,417.72
2015	535968	November 16, 2015	\$16,762.54
2014	513881	November 17, 2014	\$18,579.00
2013	488929	November 15, 2013	\$18,030.52
2012	465196	November 15, 2012	\$18,305.68
2011	443308	November 15, 2011	\$18,151.44
2010	418115	November 15, 2010	\$17,489.38
2009	393191	November 15, 2009	\$17,142.93
2008	367223	November 14, 2008	\$16,589.15
2007	334875	November 8, 2007	\$16,180.24
2006	308480	November 15, 2006	\$3,953.00
2005	279390	November 15, 2005	\$3,927.38
2004	234507	November 15, 2004	\$3,816.16
2003	197859	November 17, 2003	\$3,778.14
2002	164045	November 15, 2002	\$3,784.09
2001	128750	November 15, 2001	\$3,905.25
2000	96616	November 15, 2000	\$4,335.78
1999	64859	November 15, 1999	\$3,913.54
1998	29884	December 1, 1998	\$3,895.75

 [Annual Appraisal Report](#)

 [Current Statement](#)

©2020 Clatsop County, Oregon
Data accurate as of November 5, 2020 02:33PM Every effort has been made to offer the most current and correct information possible on these pages. The information included on these pages has been compiled by County staff from a variety of sources, and is subject to change without notice. Clatsop County makes no warranties or representations whatsoever regarding the quality, content, completeness, accuracy or adequacy of such information and data. Clatsop County reserves the right to make changes at any time without notice. Original records may differ from the information on these pages. Interest and discounts, if available, may not be accurately reflected here. Verification of information on source documents is recommended. By using this application, you assume all risks arising out of or associated with access to these pages, including but not limited to risks of damage to your computer, peripherals, software and data from any virus, software, file or other cause associated with access to this application. Clatsop County shall not be liable for any damages whatsoever arising out of any cause relating to use of this application, including but not limited to mistakes, omissions, deletions, errors, or defects in any information contained in these pages, or any failure to receive or delay in receiving information.