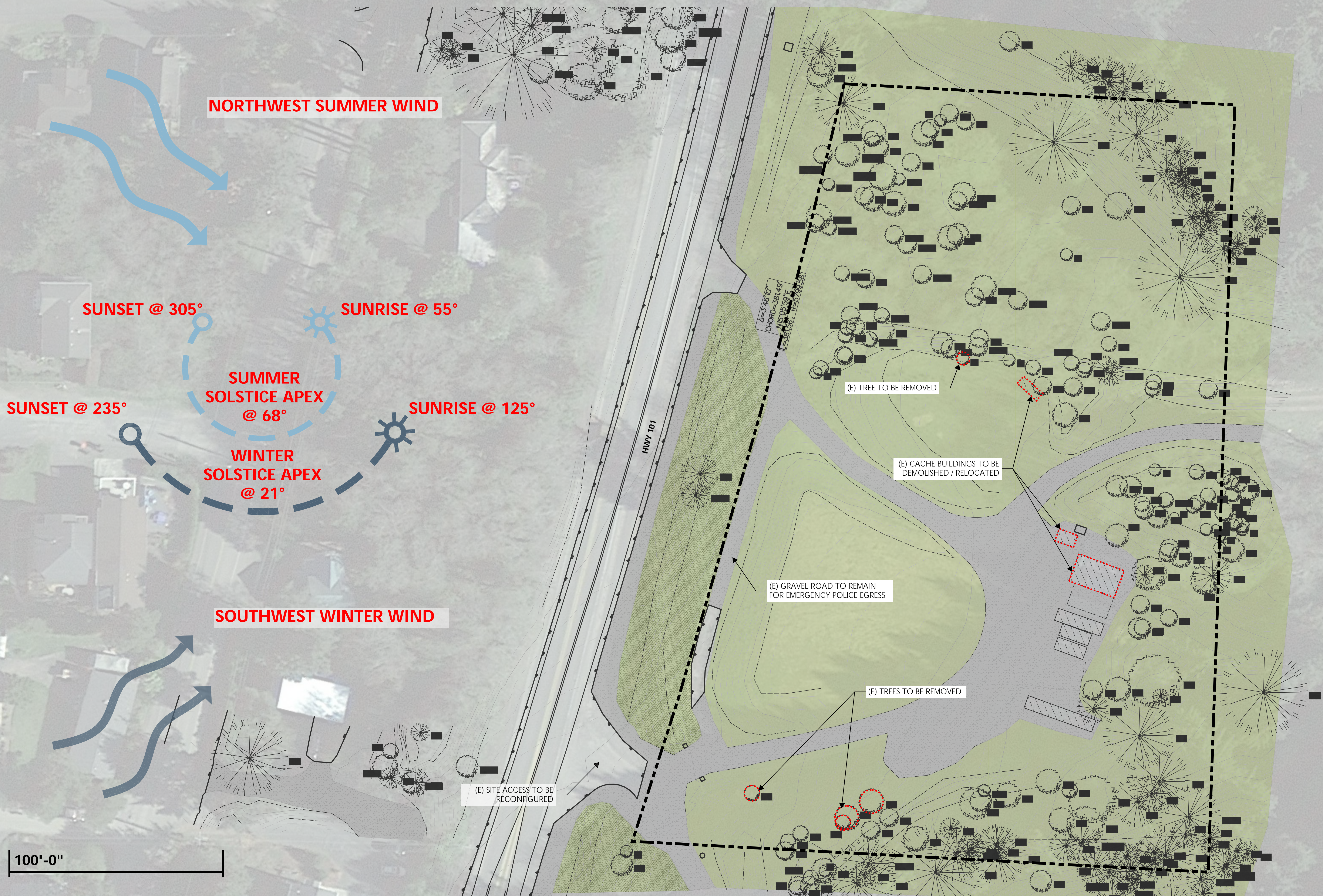


# CANNON BEACH - POLICE STATION

- A. COVER SHEET
- B. SITE ANALYSIS DIAGRAM
- C. SITE PHOTOGRAPHS
- D. SITE DEVELOPMENT PLAN
- E. LANDSCAPE PLAN
- F. ARCHITECTURAL DRAWINGS
- G. ARCHITECTURAL MODEL (DIGITAL RENDERINGS)
- H. ENERGY CONSERVATION MEASURES
- I. PROPERTY SURVEY











EXISTING GARAGE TO BE REMOVED



EXISTING CACHE SITE STRUCTURES TO REMAIN



EXISTING LOGGING ACCESS GATE



EXISTING SOUTH SITE ACCESS



ACCESS DRIVE TO PUBLIC WORKS LAND

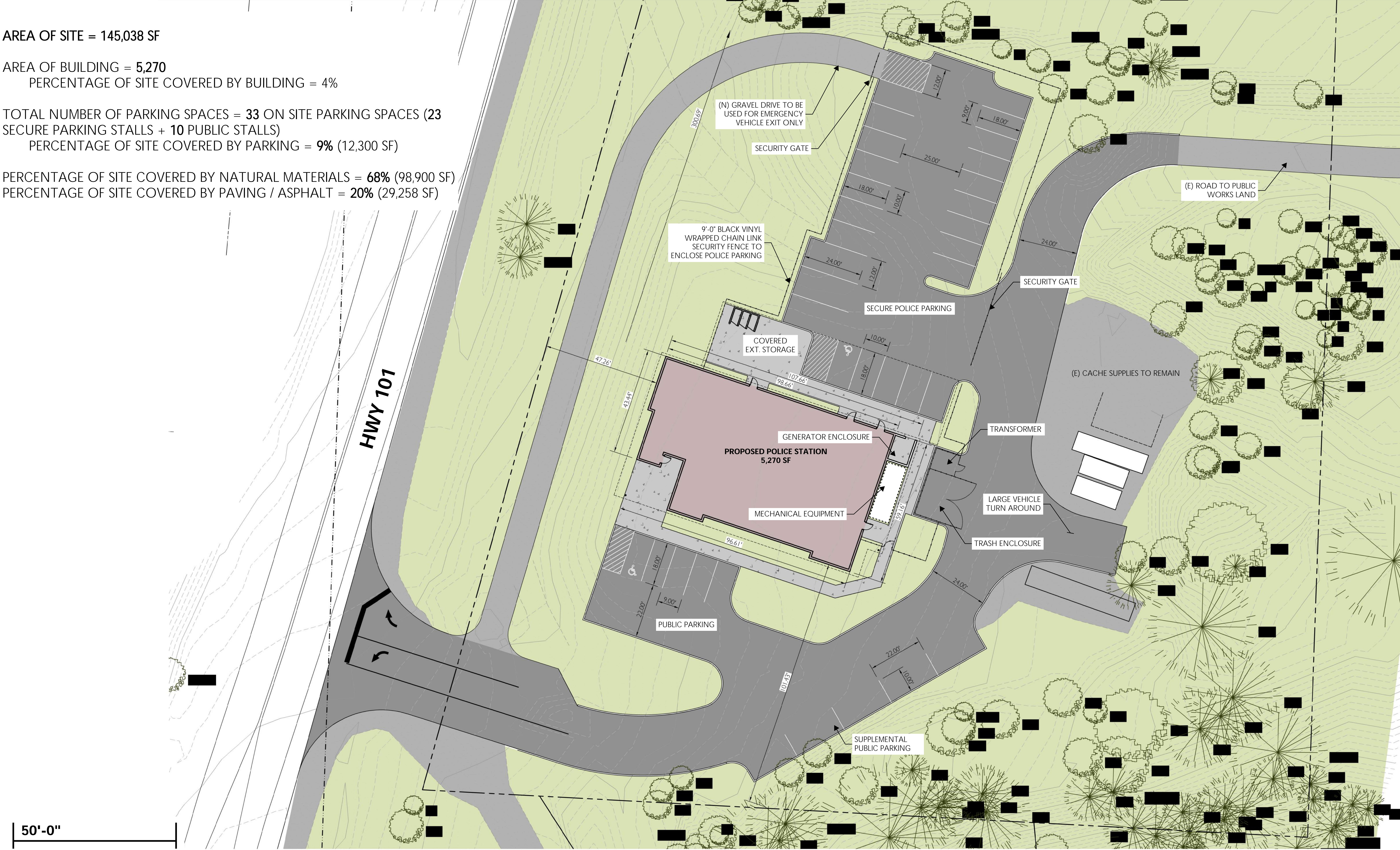


AREA OF SITE = 145,038 SF

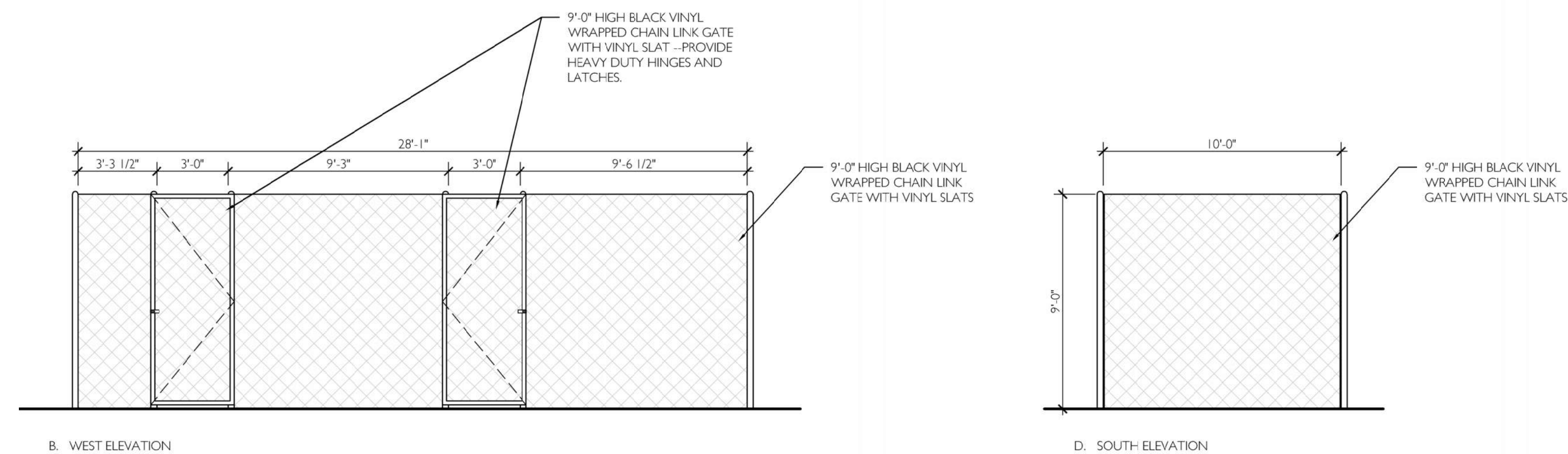
AREA OF BUILDING = 5,270  
PERCENTAGE OF SITE COVERED BY BUILDING = 4%

TOTAL NUMBER OF PARKING SPACES = 33 ON SITE PARKING SPACES (23  
SECURE PARKING STALLS + 10 PUBLIC STALLS)  
PERCENTAGE OF SITE COVERED BY PARKING = 9% (12,300 SF)

PERCENTAGE OF SITE COVERED BY NATURAL MATERIALS = 68% (98,900 SF)  
PERCENTAGE OF SITE COVERED BY PAVING / ASPHALT = 20% (29,258 SF)







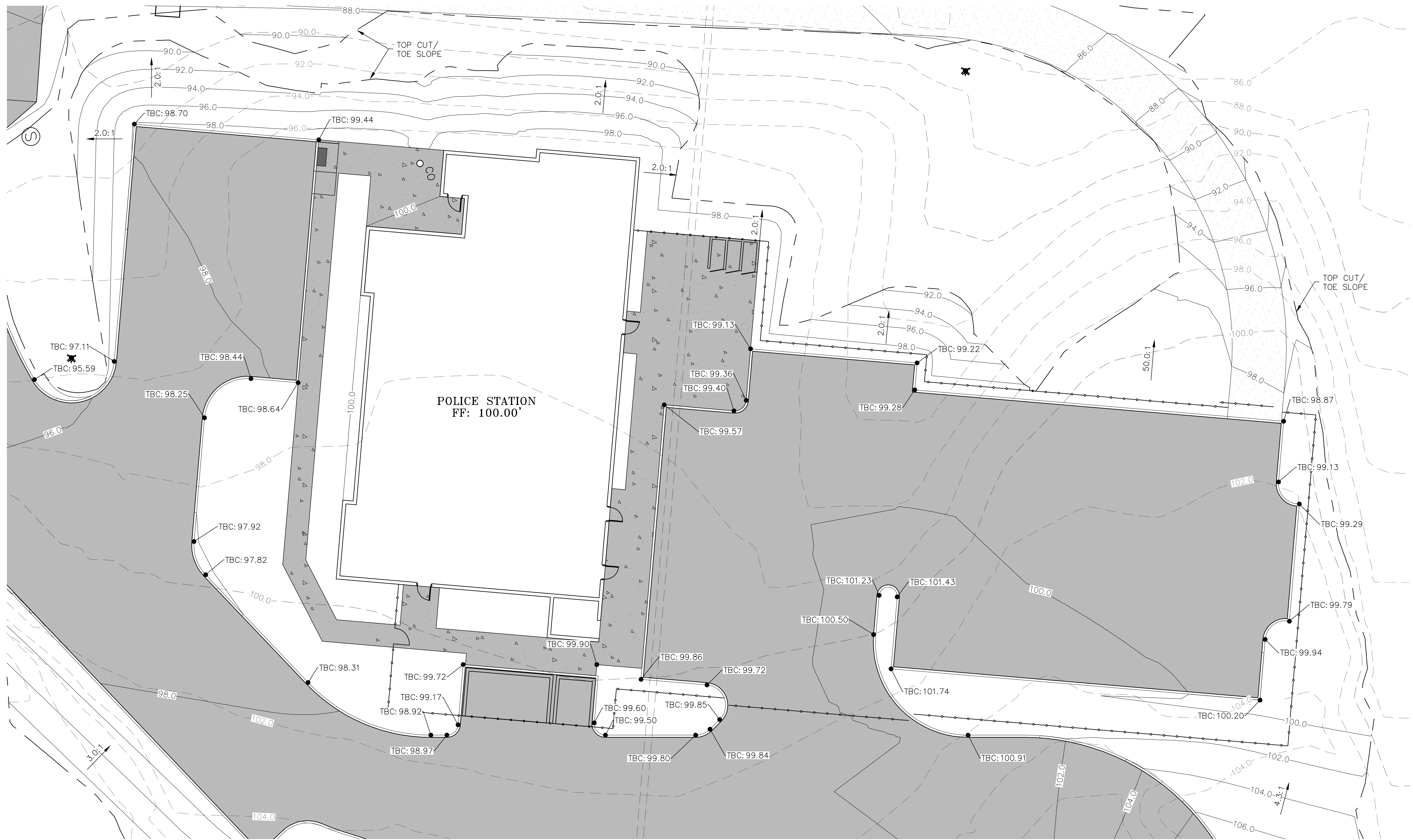
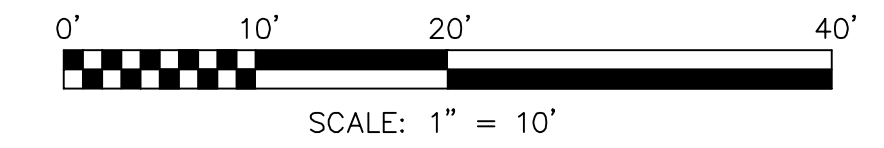
**5 TRASH ENCLOSURE - ELEVATIONS**  
A0.2 1/4" = 1'-0"

## A large black metal dog crate with white vinyl anti-fight panels, set outdoors on grass. The crate is made of black metal framing and white vinyl panels. It is situated on a green lawn with a white fence and trees in the background. The text '\*SHOWN WITH FULL VINYL ANTI-FIGHT PANELS' is overlaid at the bottom.

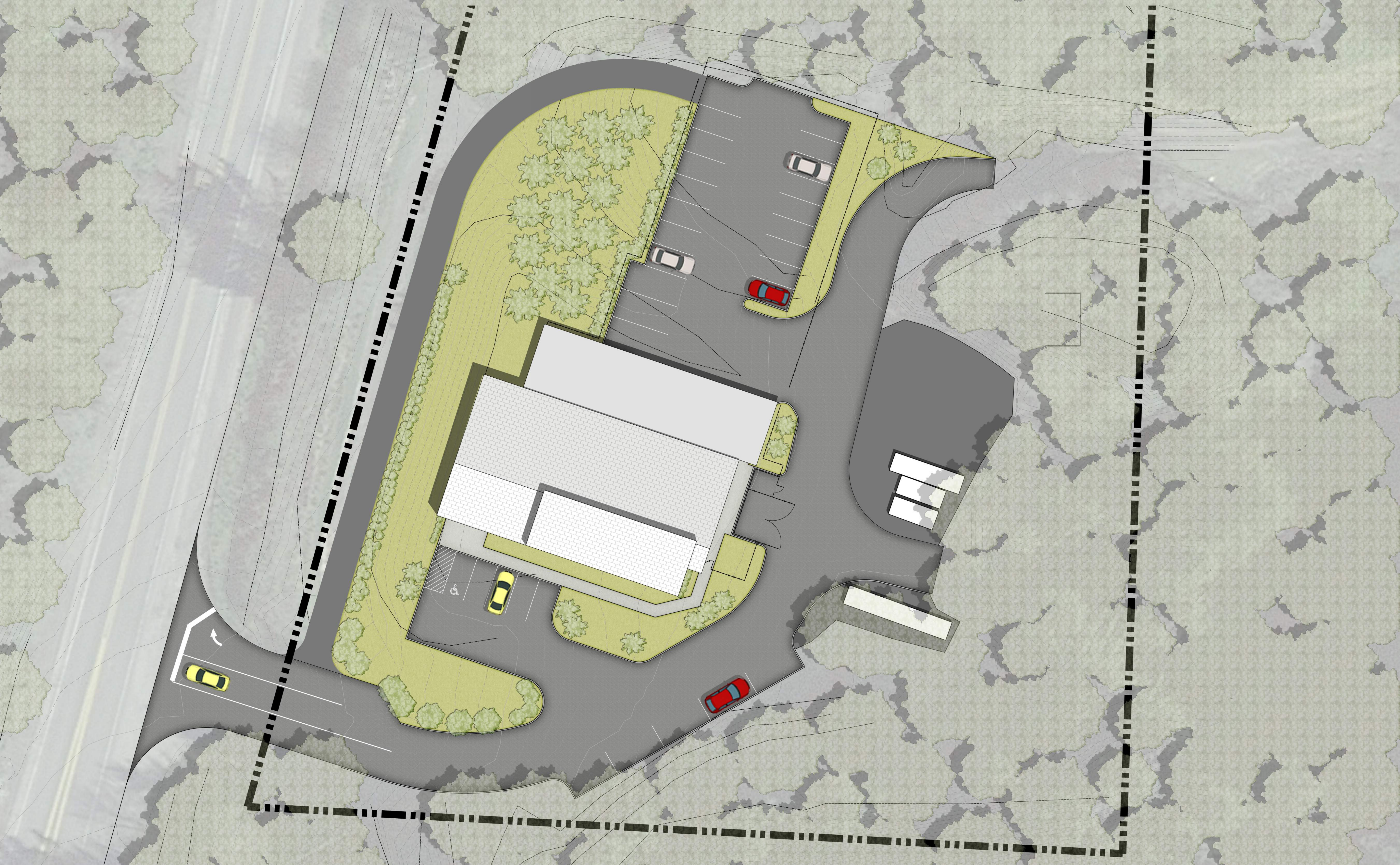
Easy Set Up  
Weather Resistant  
UV resistant  
Heavy Duty Metal Frame  
Easily Expandable  
Sloped Metal Roof  
HMO Friendly  
Works With Most Accessories  
Built In Anti Fight Panels

This kennel is made of white vinyl material that will not rot or splinter, while also keeping your dog out of the elements. This new design is very versatile you can choose to have one standalone kennel or multiple kennels. If you need multiple kennels the panels can also act as an isolation panel keeping your dogs from fighting with each other. The shelter stall is made with quality in mind with a powdered coated metal frame and beautiful white vinyl in the middle. This kennel is not only strong but looks nice as well. The white vinyl can match your vinyl fence and is pleasing to the eye, your home owners association will love the look of this kennel. The setup of the shelter stall is easy and only takes minutes, saving you time. There are many optional features that are compatible to this kennel, such as raised flooring and swivel bowls to make it exactly fit your dog's needs. Different configurations are available such as: Single vinyl kennel stalls, Multiple Full vinyl stalls, Back to Back stalls, No back stalls, Inside-outside stalls, enclosed corridor stalls, and Play-zones stalls.

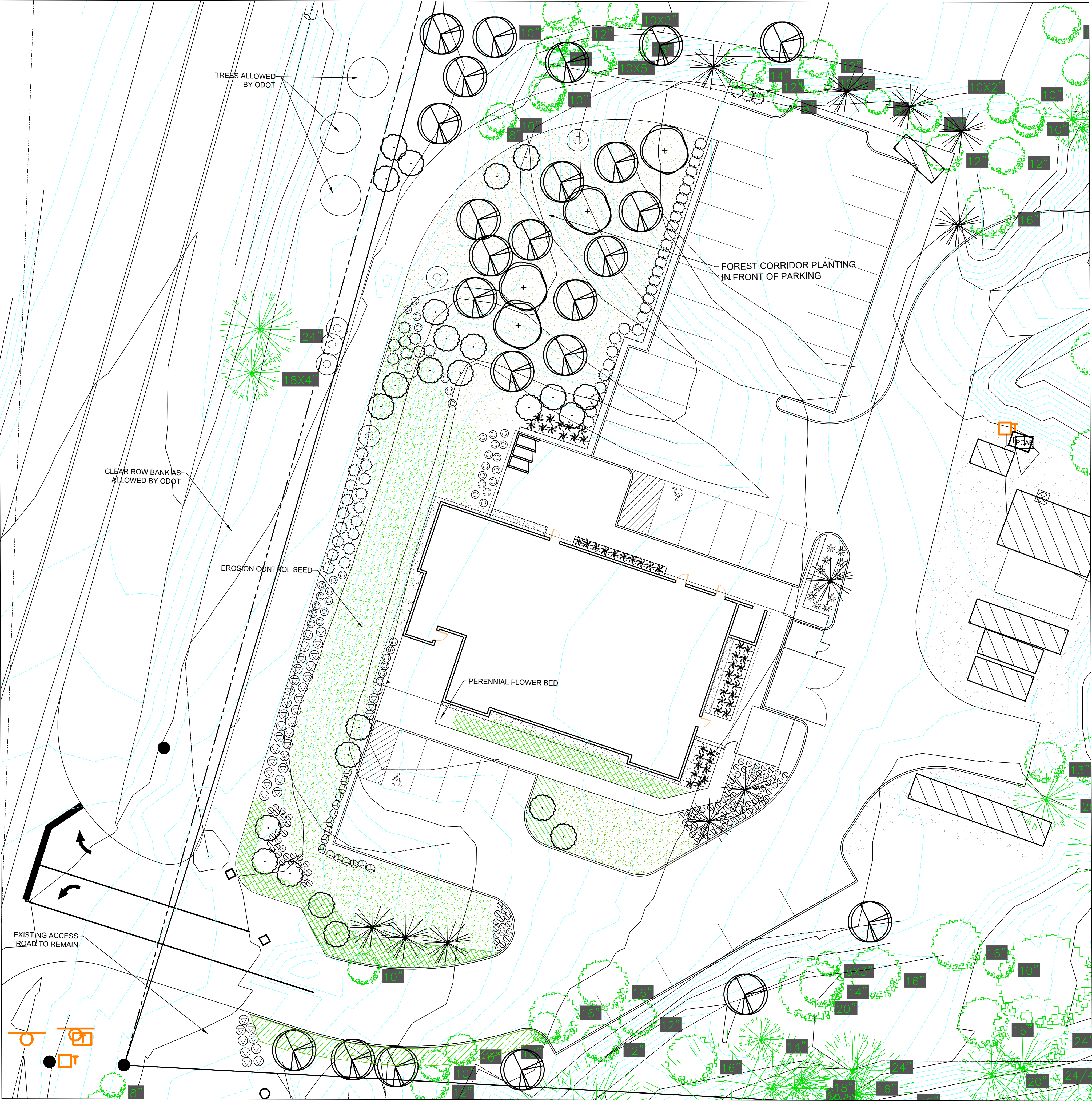












LANDSCAPE LEGEND AND INFORMATION

SYMBOL	QUAN	BOTANICAL NAME	COMMON NAME
	X	ACER CIRCINATUM	VINE MAPLE
	X	ALNUS RUBRA	RED ALDER
	X	PICEA SITCHENSIS	SITKA SPRUCE
	X	PINUS CONTORTA VAR. CONTORTA	SHORE PINE 6' HT. B&B
	X	TSUGA HETEROPHYLLA	WESTERN HEMLOCK
SHRUBS			
	XX	GAULTHERIA SHALLON	SALAL
	X	MAHONIA AQUIFOLIUM	OREGON GRAPE
	X	RUBUS PAVIFLORUS	THIMBLEBERRY
	X	SAMBUCUS RACEMOSA	RED ELDERBERRY
	X	SYMPHORICARPUS ALBUS	COMMON SNOWBERRY
	X	VACCINIUM OVATUM	EVERGREEN HUCKLEBERRY
	X	VIBURNUM EDULE	HIGHBUSH CRANBERRY
GROUNDCOVER, GRASSES AND PERENNIALS			
	220	ARCTOSTAPHYLOS UVA-URSI	KINNIKINNICK
	XX	MAHONIA NERVOSA	DULL OREGON GRAPE
	X	POLYSTICHUM MUNITUM	WESTERN SWORD FERN
	X	SUNMARK SUPREME PLUS	
	X	SUNMARK WOODLANDS MIX	
LEGEND			
		BASALT BOULDERS	
		EXISTING TREE	

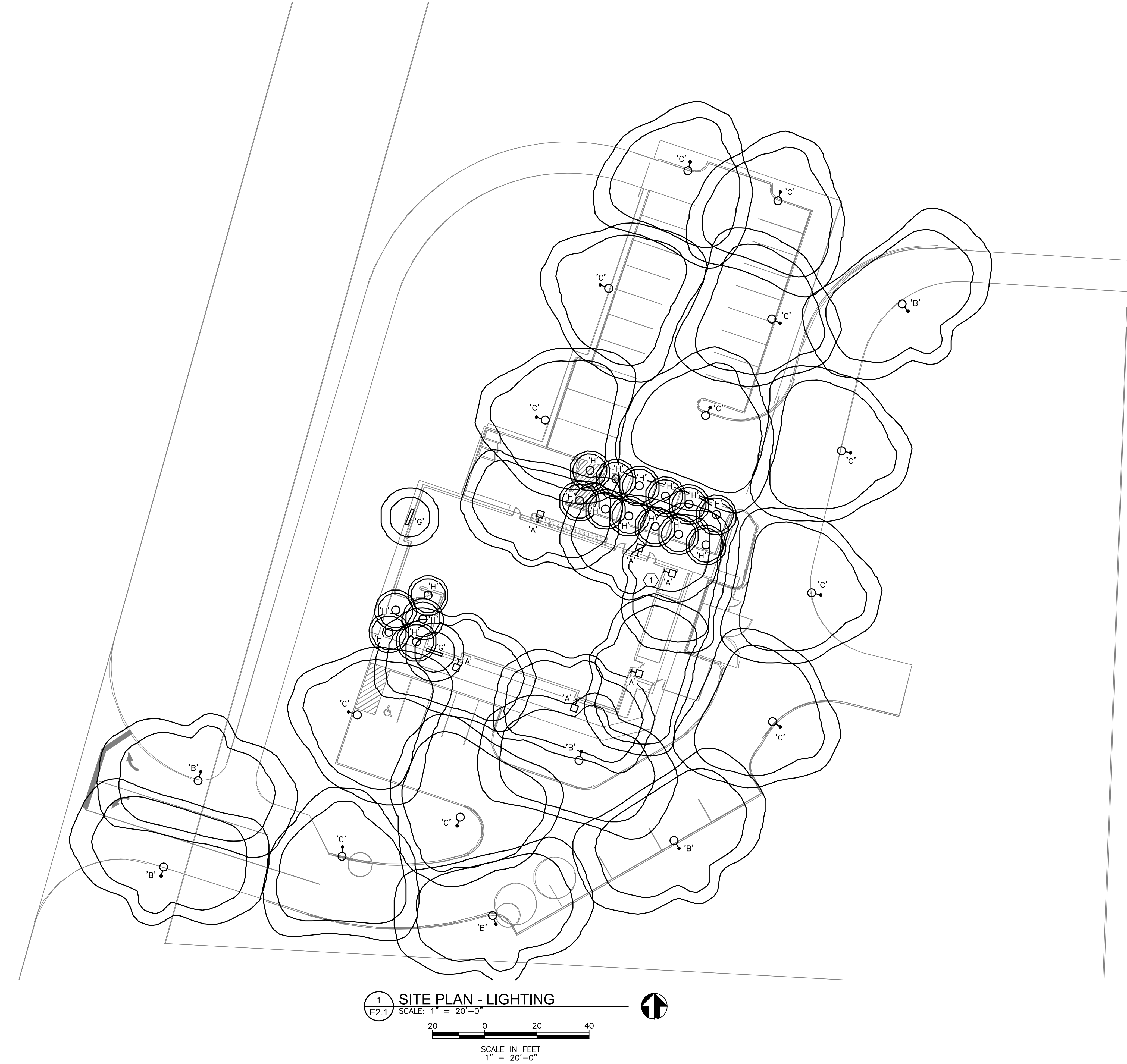


GENERAL NOTES

- A. SEE SHEET E0.1 FOR LEGEND, ABBREVIATIONS, AND GENERAL REQUIREMENT.
- B. SEE SHEET E0.1 FOR LUMINAIRE SCHEDULE.

NOTES THIS SHEET

- 1 LIGHTING CONTROLLER TO BE INSTALLED IN BUILDING. SEE SHEET E1.2 FOR LOCATION OF CONTROLLER ON LIGHTING FLOOR PLAN.

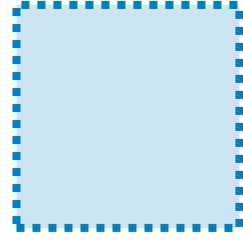


LUMINAIRE SCHEDULE

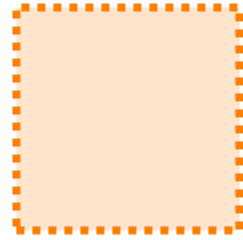
TYPE	DESCRIPTION	MANUFACTURER	CATALOG NUMBER	LAMP	WATTAGE
A	WALL MOUNT LED LUMINAIRE, BLACK POWDER COAT FINISH, 3000 K CCT, 120/277V INPUT, 5121 LM, 80 CR, 0-10 DIMMING, FROSTED LENS, MARINE GRADE BODY & HARDWARE, TYPE 3 DISTRIBUTION, 10KV SURGE SUPPRESSOR, MOUNT 9.5' ABOVE GROUND	LIGMAN LIGHTING OR APPROVED EQUAL	LQU-31343-37W-W-W30-01-120/277V-DIM-F	LED	37 W
B	POST TOP LED AREA LUMINAIRE, BLACK POWDER COAT FINISH, 3000 K CCT, 120/277V INPUT, 5121 LM, 80 CR, 0-10 DIMMING, 82-UG-GO, MARINE GRADE BODY & HARDWARE, TYPE 3 DISTRIBUTION, 10KV SURGE SUPPRESSOR	LIGMAN LIGHTING OR APPROVED EQUAL	LQU-20001-37W-T3-W30-01-120/277V-DIM-F	LED	37 W
C	POST TOP LED AREA LUMINAIRE, BLACK POWDER COAT FINISH, 3000 K CCT, 120/277V INPUT, 5121 LM, 80 CR, 0-10 DIMMING, 82-UG-GO, MARINE GRADE BODY & HARDWARE, TYPE 4 DISTRIBUTION, 10KV SURGE SUPPRESSOR	LIGMAN LIGHTING OR APPROVED EQUAL	LQU-20001-37W-T4-W30-01-120/277V-DIM-F	LED	37 W
POLE	1" ROUND STRAIGHT ALUMINUM POLE, 1" SHAFT DIAMETER, 0.188" THICK, 2.95" x 3.5" TENON, BLACK POWDER COAT FINISH, DIE CAST BASE COVER, MOUNT ON CEMENT BASE 3' ABOVE GRADE	LIGMAN LIGHTING OR APPROVED EQUAL	APD-RSA-5018-11'-5" DIA. 188"-SC74-01	-	-
D	1" LINEAR PENDANT LED LUMINAIRE, WHITE POWDER COAT FINISH, 3000 K CCT, 120/277V INPUT, 2847 LM, 80 CR, 0-10 DIMMING, FROSTED LENS, 83-UG-GO, MARINE GRADE BODY & HARDWARE, WIDE DISTRIBUTION, 10KV SURGE SUPPRESSOR, 47" SUPPORT CORDS, HANG 9.5' ABOVE FLOOR	LIGMAN LIGHTING OR APPROVED EQUAL	LCA-95001-28W-W-W30-03-120/277V-DIM-F	LED	28 W
H	OUTDOOR SURFACE MOUNT CEILING LUMINAIRE, BLACK POWDER COAT FINISH, 3700K CCT, 120/277V INPUT, VERY WIDE DISTRIBUTION, 80-UG-GO, CLEAR TOUGHENED GLASS, HIGH CORROSION RESISTANCE	LIGMAN LIGHTING OR APPROVED EQUAL	LD-80001-VW-01	LED	3W
G	LINEAR WALL MOUNT LED LUMINAIRE, BLACK POWDER COAT FINISH, 3700K CCT, 120/277V INPUT, 500 LM PER FOOT, 0-10V DIMMING, FROSTED LENS, CLASS 2, MOUNT TO CANOPY W/ BICO COLLAR	LIGMAN LIGHTING OR APPROVED EQUAL	L1703-CRK-MD-8K-21K-12-010	LED	5.5 W / FT



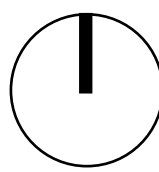
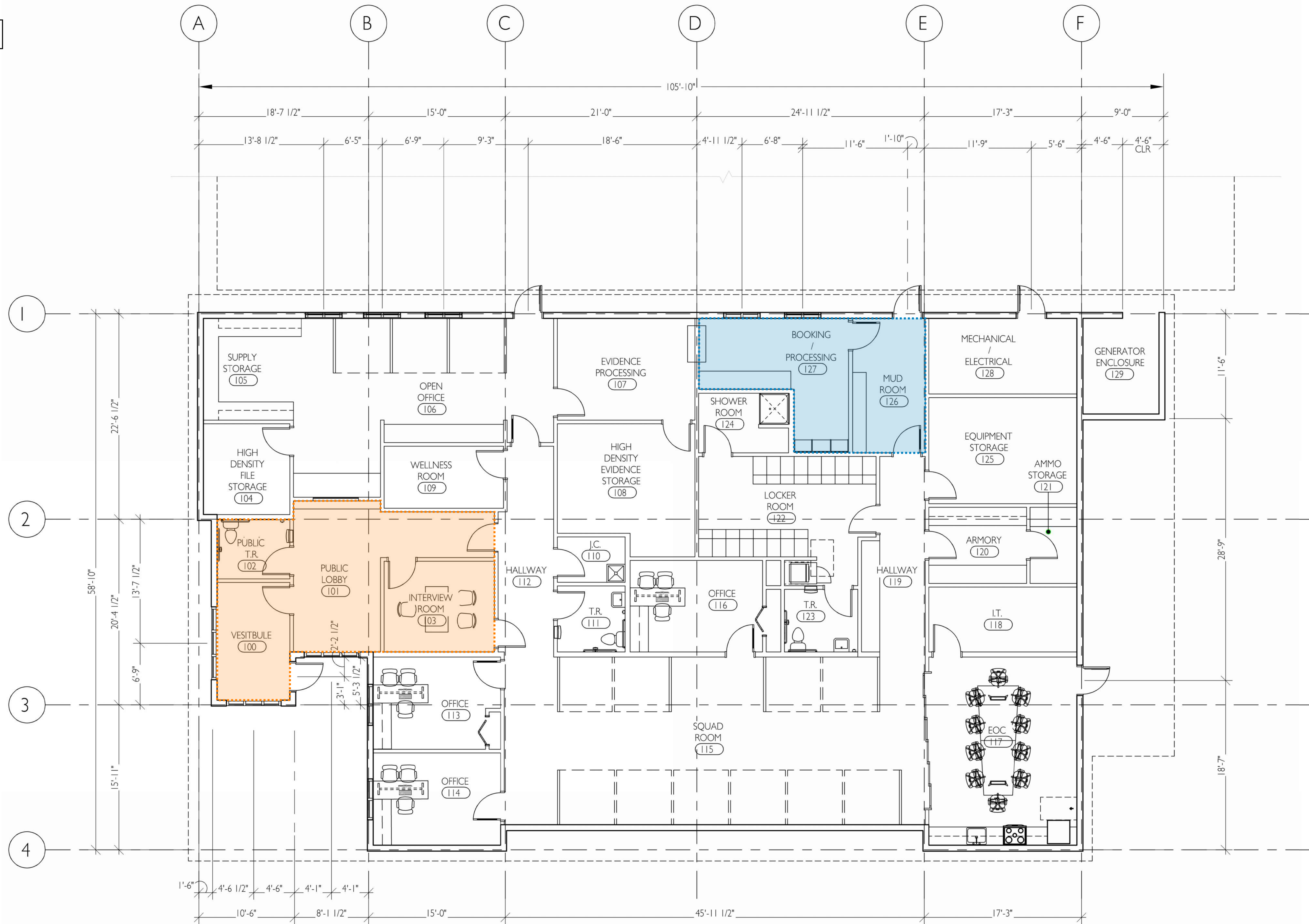
BUILDING TOTAL: 5,270 SF



SECURE ENTRY



OPEN TO PUBLIC



FLOOR PLAN

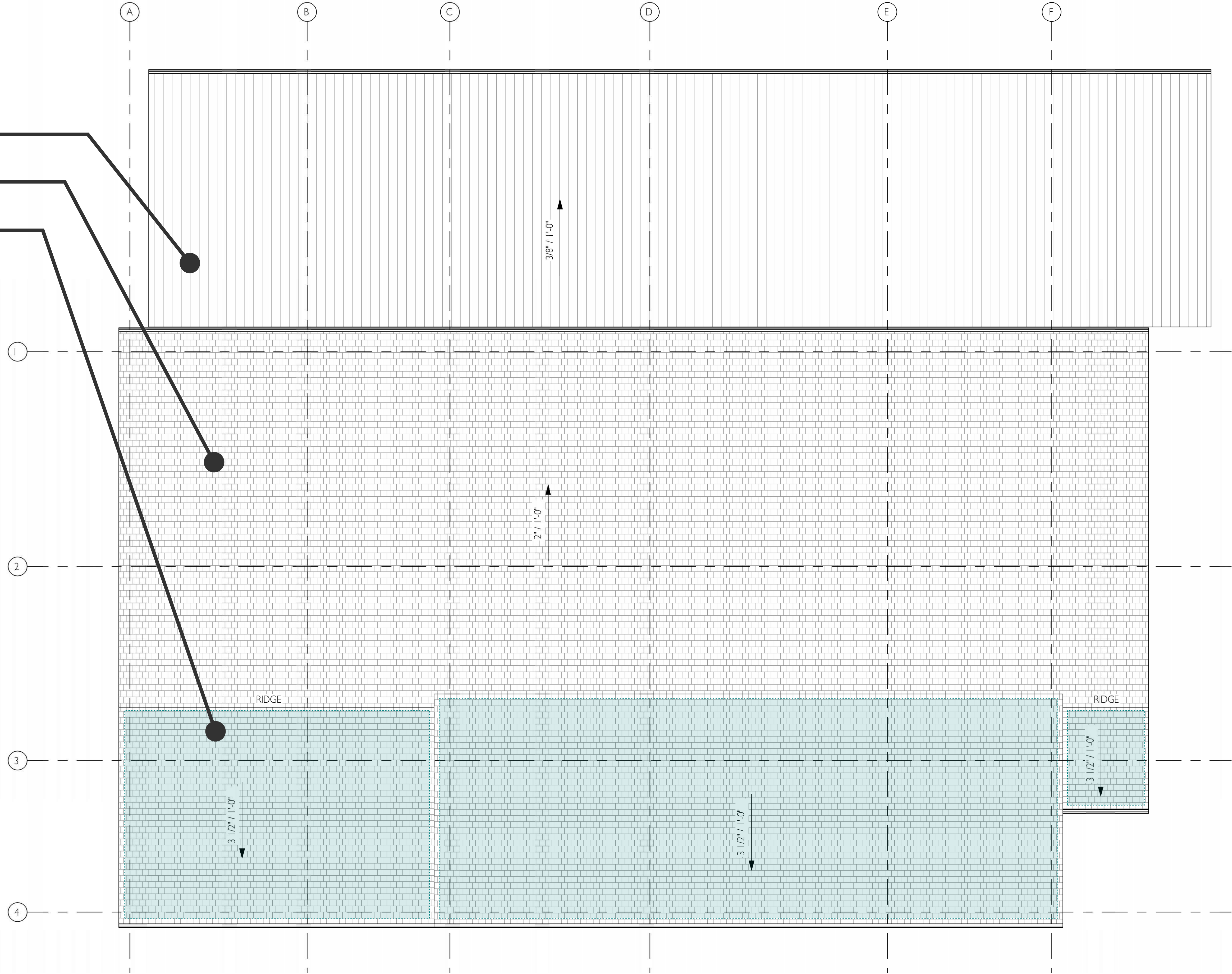
1/8" = 1'-0"



COVERED PARKING STRUCTURE - MIN SLOPE 3/8:12

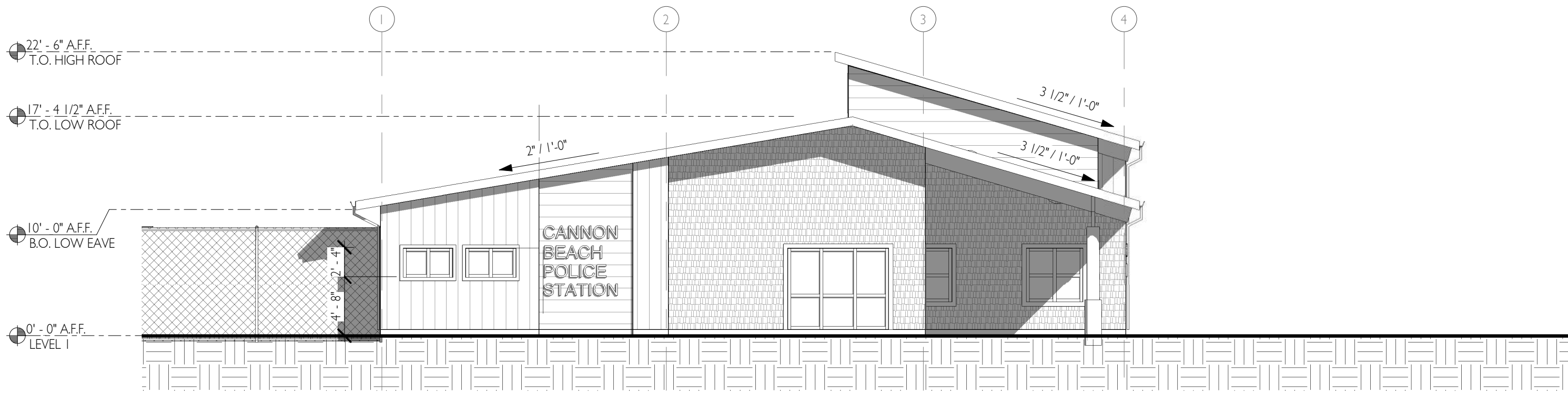
ASPHALT SHINGLE ROOF - MIN SLOPE 2:12

PROPOSED AREA FOR SOLAR PANEL INSTALLATION



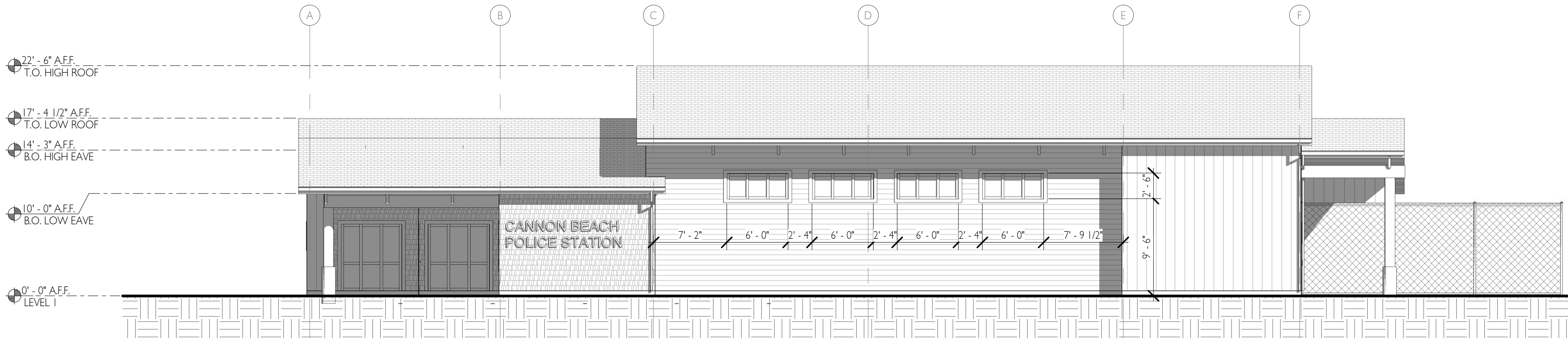
**1** ROOF PLAN  
1/8" = 1'-0"





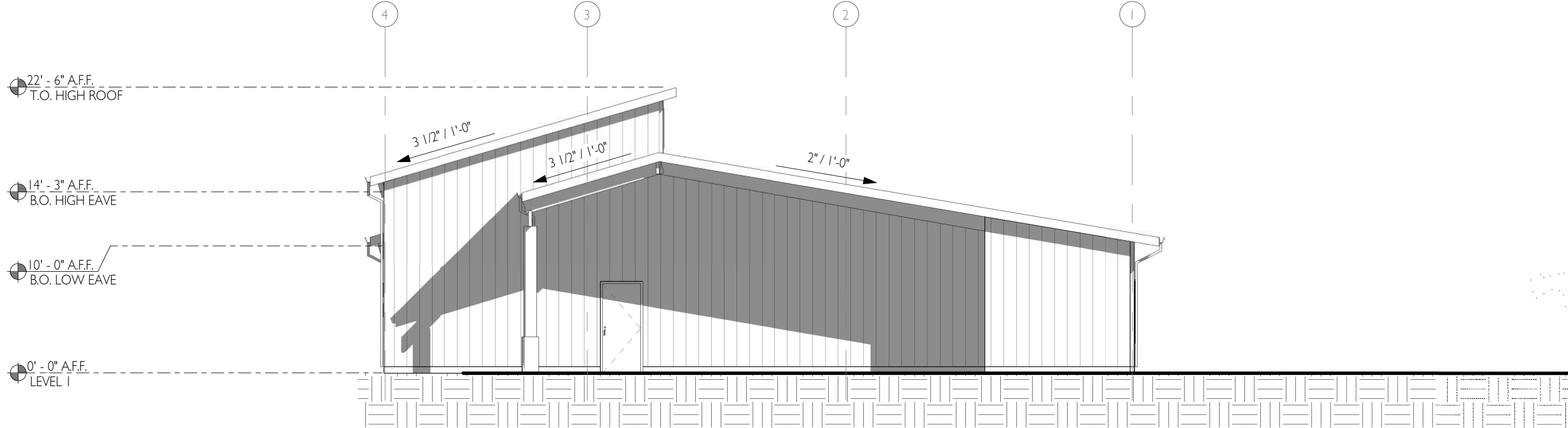
WEST ELEVATION

1/8" = 1'-0"



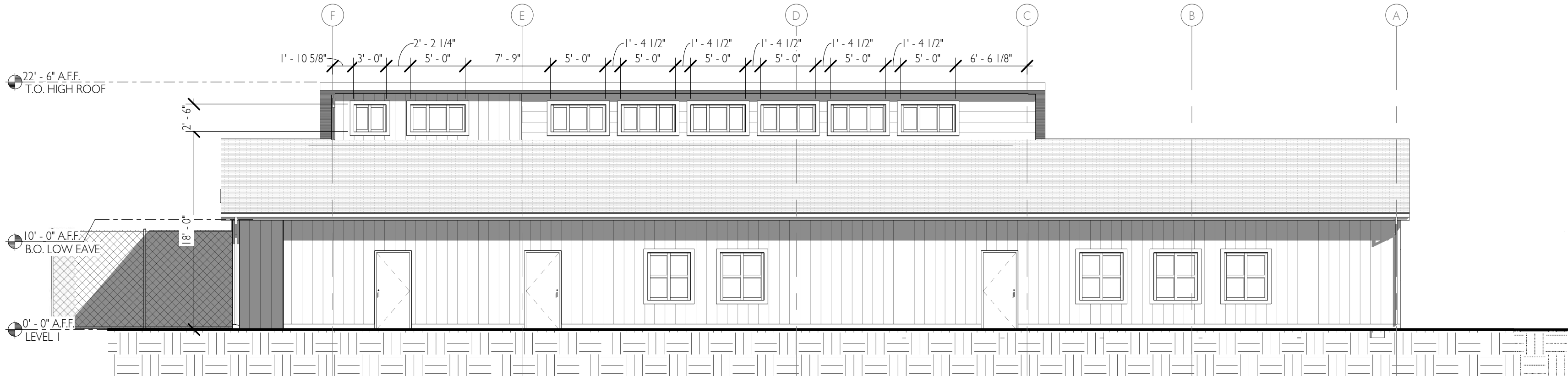
SOUTH ELEVATION

1/8" = 1'-0"



EAST ELEVATION

1/8" = 1'-0"



NORTH ELEVATION

1/8" = 1'-0"

ELEVATION MATERIAL LEGEND

HATCH	TAG	MATERIAL TYPE	MANUFACTURER	PRODUCT LINE	COLOR	NOTES
	LS-1	HORIZONTAL CEDAR SIDING	TBD	TBD	UNTREATED / NATURAL	
	LS-2	VERTICAL CEDAR SIDING - STAINED	TBD	TBD	UNTREATED / NATURAL	PROVIDE ALTERNATE FOR CEMENTITIOUS PANELS
	SHK-1	CEDAR SHAKE	TBD	TBD	UNTREATED / NATURAL	
	WD-1	WOOD BASE	TBD	TBD	STAINED	



**MATERIAL OPTION 1**

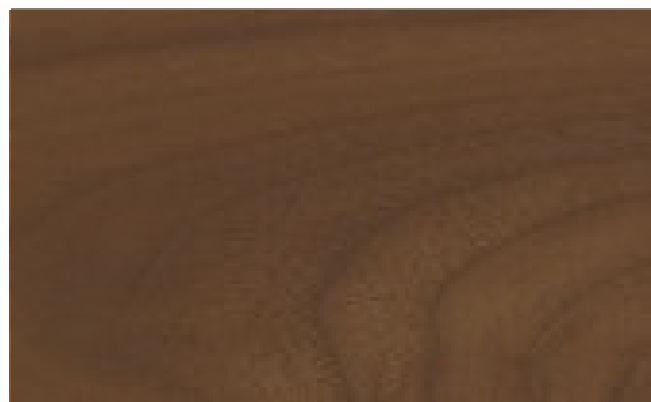
VERTICAL CEDAR SIDING -  
NATURAL FINISH



CEDAR SHAKE -  
NATURAL FINISH



WINDOW FRAME + FASCIA  
DARK BROWN STAIN



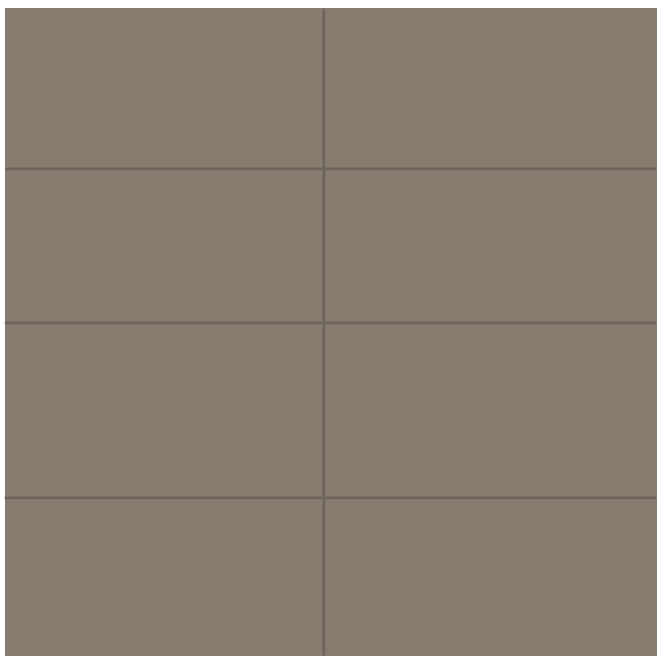
HOORORIZONTAL CEDAR  
SIDING - NATURAL FINISH





MATERIAL OPTION 2

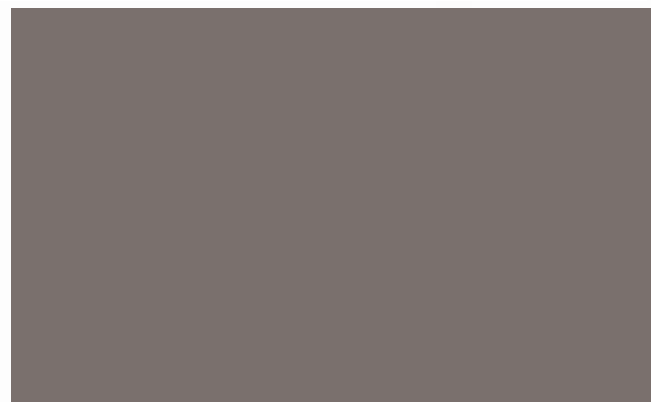
CEMENTITIOUS PANELS  
--PAINTED



CEDAR SHAKE -  
NATURAL FINISH



WINDOW FRAME + FASCIA  
DARK GRAY



HOORORIZONTAL CEDAR  
SIDING - NATURAL FINISH



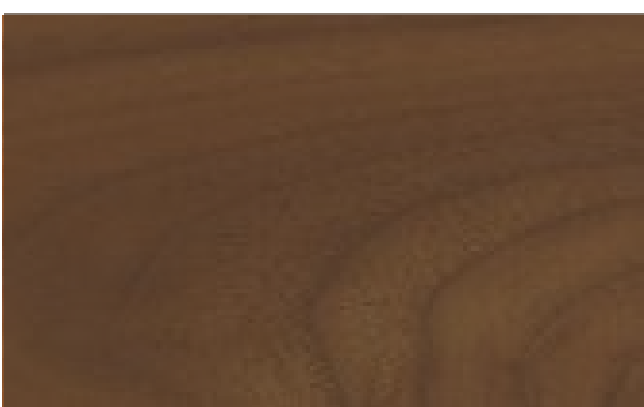


**MATERIAL OPTION 1**

CEDAR SHAKE -  
NATURAL FINISH



WINDOW FRAME + FASCIA  
DARK BROWN STAIN



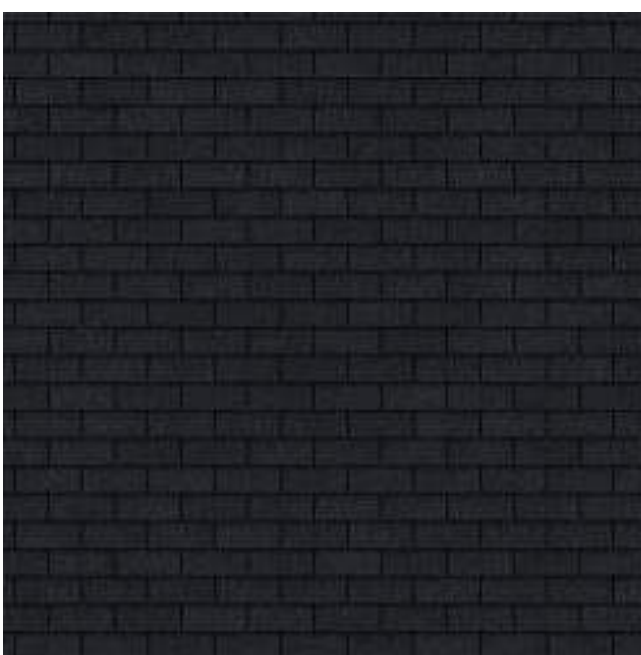
VERTICAL CEDAR SIDING -  
NATURAL FINISH



HOORIZONTAL CEDAR  
SIDING - NATURAL FINISH



ASPHALT  
SHINGLE ROOF



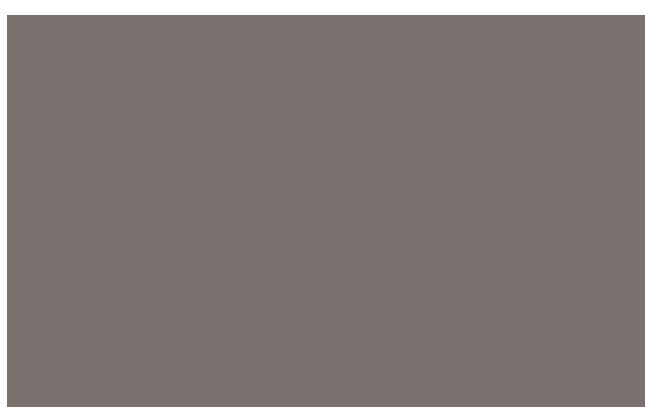


MATERIAL OPTION 2

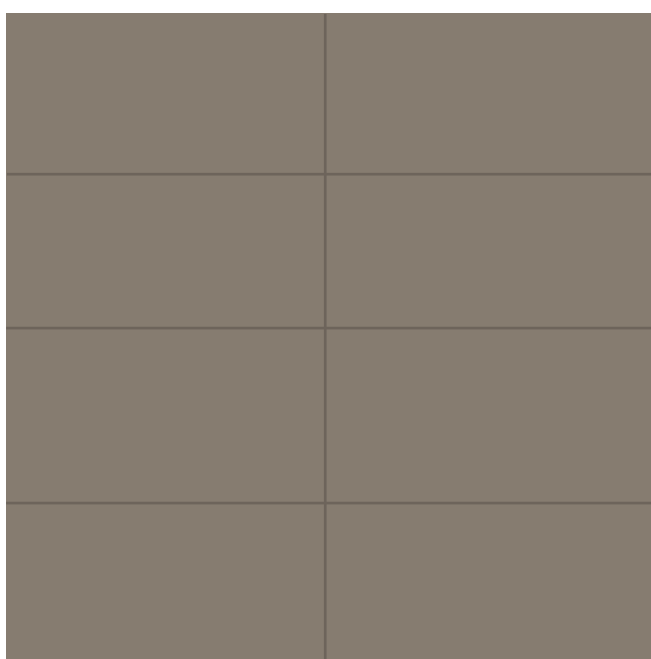
CEDAR SHAKE -  
NATURAL FINISH



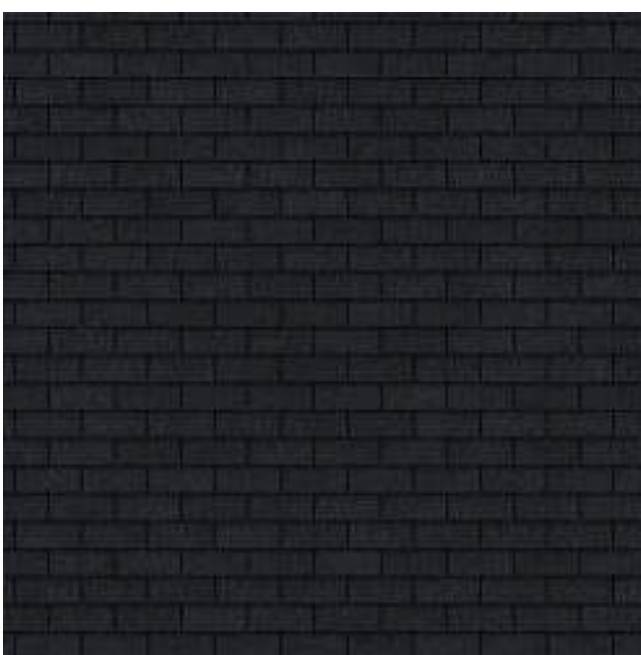
WINDOW FRAME + FASCIA  
DARK GRAY



CEMENTITIOUS PANELS  
--PAINTED



ASPHALT  
SHINGLE ROOF



HOORIZONTAL CEDAR  
SIDING - NATURAL FINISH





CEDAR SHAKE -  
NATURAL FINISH



ASPHALT  
SHINGLE ROOF



WINDOW FRAME + FASCIA  
DARK BROWN STAIN



HOORORIZONTAL CEDAR  
SIDING - NATURAL FINISH



VERTICAL CEDAR SIDING -  
NATURAL FINISH



MATERIAL OPTION 1





CEDAR SHAKE -  
NATURAL FINISH



ASPHALT  
SHINGLE ROOF



WINDOW FRAME + FASCIA  
DARK GRAY

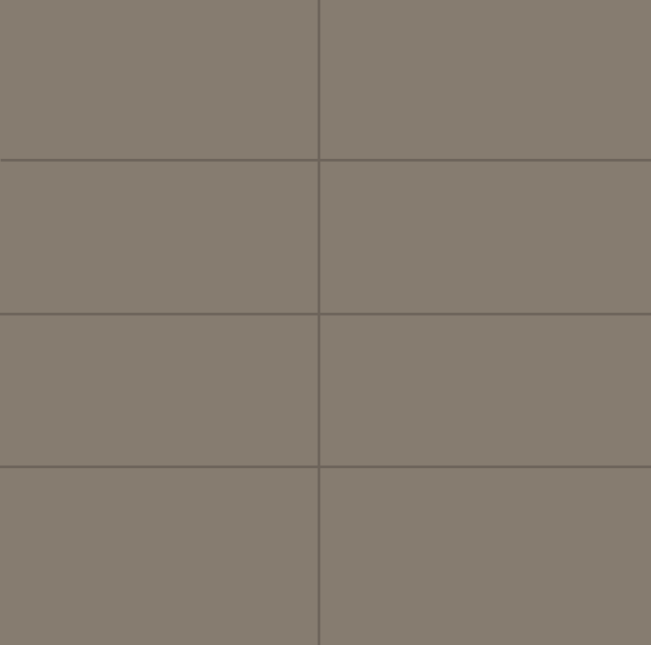


HOORORIZONTAL CEDAR  
SIDING - NATURAL FINISH



MATERIAL OPTION 2

CEMENTITIOUS PANELS  
--PAINTED







#### BUILDING MOUNTED SIGNAGE

- BLACK LETTERS @ 12"
- SIGNAGE TO BE LIT FROM ABOVE BY CANOPY LIGHT --SEE LIGHTING PLANS FOR ADDITIONAL INFORMATION
- VISIBLE AT DISTANCE OF 300' +/- ACCORDING TO INFORMATION PROVIDED BY THE UNITED STATES SIGN COUNCIL (USSC)







## SECURE PARKING LOT AND POLICE BUILDING ACCESS

- AREA OF COVERED PARKING INCLUDED AS AN ADDITIVE ALTERNATE





# ENERGY CONSERVATION STRATEGIES & MEASURES

## SITE

Site lighting design and fixtures will comply with International Dark Sky criteria, including limits on glare and color temperature.  
On-site, below grade storm water treatment facilities to filter rainwater prior to discharge into public system to improve water quality  
Native and resilient site landscaping to limit additional water use.

## BUILDING

The building will be all electric, with no regular reliance on natural gas: building resiliency to be provided by an on-site diesel generator  
Traditional, renewable wood-framing and exterior finish materials with insulation and a high performance glazing system  
Building envelope features rain screen system behind exterior cladding for enhanced building performance  
Low emitting interior finishes and furniture and Energy Star compliant appliances

## INTERIOR LIGHTING

Increased daylighting provided through clerestories and interior relites, in order to bring natural light into the building core.  
High-efficiency LED lighting throughout to comply with latest energy code requirements, including occupancy sensors with automatic on/off and daylight harvesting

## HVAC (High performance, efficient heating, cooling and ventilation system)

Variable Refrigerant Flow (VRF) with Dedicated Outside Air System (DOAS) and energy recovery  
Dedicated mini split system with 18 SEER in server room  
The DOAS is a dedicated ventilation system designed to condition outdoor air during ventilation. DOAS handles ventilation and the VRF system handles cooling and heating. VRF system moves conditioned refrigerant directly to each zone's indoor unit

## PLUMBING

High efficiency electric heat pump water heater  
Domestic plumbing piping, both cold and hot water with code compliant insulation and low-flow fixtures and fittings

## RENEWABLE ENERGY

Electrical service installed to support future electric vehicle charging station - 20% of parking to be "EV Ready"  
1.5% of building budget dedicated to solar photo-voltaic (PV) system per Oregon Green Energy Technology

## PROJECT GOALS:

*Avoid harmful chemicals, provide excellent ventilation, acoustic comfort, and quality indoor and outdoor lighting*

*Provide renewable energy via solar panels*

*Prevent waste through construction diversion and recycling materials*

*Limit indoor and outdoor water use - review measures to improve site water quality*

*Use energy efficient systems*

*Limit reliance on fossil fuels*



PORTIONS OF THE SE1/4 AND THE SW1/4 OF THE NW1/4  
OF SECTION 6, TOWNSHIP 4 NORTH, RANGE 10 WEST,  
WILLAMETTE MERIDIAN, CLATSOP COUNTY, OREGON

OREGON NORTH STATE PLANE COORDINATE SYSTEM NAD 83 (2011) BASED ON GPS OBSERVATIONS.  
DISTANCES SHOWN HEREON ARE GROUND DISTANCES, INTERNATIONAL FEET, SCALED ABOUT CONTROL  
POINT NO. 1. TO CONVERT TO GRID DISTANCES MULTIPLY BY THE COMBINED FACTOR OF  
0.999967147.

NORTH AMERICAN VERTICAL DATUM OF 1988 (NAVD88) BASED ON GPS OBSERVATIONS  
PROCESSED THROUGH THE ONLINE POSITIONING USER SERVICE (OPUS).

FOUND MONUMENTS TABLE	
POINT NO.	DESCRIPTION
100	FOUND 5/8" IR W/ YPC STAMPED "WAGNER PLS 1373" DOWN 0.3'
101	FOUND 5/8" IR W/ YPC STAMPED "HLB + ASSOC INC" FLUSH
102	FOUND 5/8" IR W/ YPC STAMPED "HLB + ASSOC INC" DOWN 0.1'
103	FOUND 5/8" IR W/ YPC
104	FOUND 1/2" IRON PIPE UP 0.1'
105	FOUND 5/8" IR W/ YPC STAMPED "K FOESTE LS 849" DOWN 0.1'
106	FOUND 5/8" IR W/ RPC STAMPED "CRITES LS 1887" DOWN 0.3'
107	FOUND 5/8" IR W/ RPC STAMPED "CRITES LS 1887" FLUSH
108	FOUND 5/8" IR NO CAP UP 0.2'
109	FOUND 5/8" IR W/ YPC STAMPED "WAGNER PLS 1373" UP 0.2'
110	FOUND 5/8" IR W/ YPC STAMPED "HLB + ASSOC INC" UP 0.2' BENT SLIGHTLY W
111	FOUND 5/8" IR W/ RPC STAMPED "CRITES LS 1887" UP 0.1' W/ WITNESS POST 2.6' N
112	FOUND 5/8" IR W/ YPC STAMPED "K FOESTE LS 849" DOWN 0.1' W/ WITNESS POST
113	FOUND 5/8" IR NO CAP UP 0.5' W/ 4X4 WOOD POST
114	FOUND 5/8" IR W/ RPC STAMPED "CRITES LS 1887" UP 0.1' W/ T-POST WITNESS
115	FOUND 5/8" IR W/ YPC STAMPED "K FOESTE LS 849" UP 0.2' IN ROOT OF 48" TREE STUMP
116	FOUND 5/8" IR W/ YPC STAMPED "K FOESTE LS 849" UP 0.2'
117	FOUND 5/8" IR W/ RPC STAMPED "CRITES LS 1887" FLUSH
118	FOUND 1" IR NO CAP W/ 4X4 WOOD POST
120	FOUND 3/4" IRON PIPE UP 0.1'
123	FOUND 5/8 IR NO CAP

	BUILDING
	BUILDING OVERHANG
	ROAD STRIPING
	EDGE OF PAVEMENT
	EDGE OF CONCRETE
	EDGE OF GRAVEL
	EDGE OF LANDSCAPING
	EDGE OF WATER
	WATER
	STORM SEWER
	OVERHEAD POWER
	SANITARY SEWER
	MAJOR CONTOUR
	MINOR CONTOUR
	BUILDING HATCH
	CONCRETE HATCH
	GRAVEL HATCH
	CENTERLINE
	RIGHT OF WAY
	BOUNDARY LINE
	EASEMENT
	LOT/PARCEL LINE
	SECTION LINE
	FOUND MONUMENT - NO
	FOUND MONUMENT -
	CONTROL POINT - SEE
	MAILBOX
	SIGN
	BOLLARD
	FENCE GATE POST
	POWER METER
	POWER POLE
	POWER TRANSFORMER
	POWER POLE W/ LIGHT
	POWER VAULT
	POWER JUNCTION BOX
	GUY ANCHOR
	POWER CABINET
	SANITARY SEWER CLEANOUT
	SANITARY SEWER MANHOLE
	STORM CATCH BASIN
	STORM MANHOLE
	STORM CULVERT
	FIRE HYDRANT
	WATER METER
	WATER VALVE
	TELEPHONE RISER
	TELEPHONE MANHOLE
	TELEPHONE VAULT
	IRRIGATION CONTROL VALVE
	UNKNOWN JUNCTION BOX
	TREE - DECIDUOUS
	TREE - CONIFER

1. THE LOCATION OF EXISTING UNDERGROUND UTILITY FACILITIES SHOWN HEREON ARE BASED ON LOCATE MARKS REQUESTED FOR THIS SURVEY PER ONE CALL PUBLIC LOCATE TICKET 23176395. THE SURVEYOR ASSUMES NO RESPONSIBILITY FOR THE ACCURACY OF THE LOCATION OF SUCH UNDERGROUND UTILITIES BY THE RESPECTIVE UTILITY OWNERS, NOR FOR THE EXISTENCE OF BURIED OBJECTS WHICH ARE NOT SHOWN ON THE PLAN. ALL UTILITY LOCATIONS SHOULD BE FIELD VERIFIED PRIOR TO CONSTRUCTION.
2. FIELD WORK WAS COMPLETED ON JULY 17, 2023.
3. STORM DRAINAGE AND SANITARY SEWER PIPE SIZES AND MATERIALS WERE DERIVED FROM DIRECT OBSERVATION WHERE POSSIBLE.
4. THE PROJECT BOUNDARY SHOWN HEREON IS BASED ON THE LEGAL DESCRIPTION CONTAINED IN QUILCLAIM DEED RECORDED IN BOOK 742, PAGE 935, CONVEYING OWNERSHIP FROM CLATSOP COUNTY TO THE CITY OF CANNON BEACH. MONUMENTS FOUND PER CS 12933 AND CS 10616 DEFINE TO SUBJECT PROPERTY, THE RIGHT OF WAY LIMITS OF HEMLOCK, SITKA, AND KENAI STREETS WITHIN 660 FEET OF MONUMENTS FOUND PER CS 11762 AND CS 10500. STATE HIGHWAY 101 WAS RETRACED PER MAPS 6B-3-2 AND 7B-5-10.
5. TITLE EXCEPTIONS ARE BASED ON OWNERSHIP AND ENCUMBRANCES REPORT ORDER NO. 360423002654, PREPARED BY TICOR TITLE COMPANY OF OREGON, EFFECTIVE DATE JULY 28, 2023.
6. TITLE EXCEPTION NO. 5 & NO. 6 RESTRICT HIGHWAY ACCESS, EXCEPT FOR A 35' WIDE ACCESS ALLOWED AT STATION 362+30, AS SHOWN HEREON.

PER OWNERSHIP AND ENCUMBRANCES REPORT ORDER NO. 360423002654, PREPARED BY TICOR TITLE COMPANY OF OREGON, EFFECTIVE DATE JULY 28, 2023.

A PARCEL OF LAND LYING IN THE SOUTHEAST QUARTER OF THE NORTHWEST QUARTER OF SECTION 6, TOWNSHIP 4 NORTH, RANGE 10 WEST, WILLAMETTE MERIDIAN, COUNTY OF CLATSOP, STATE OF OREGON, AND BEING A PORTION OF THAT PROPERTY DESCRIBED IN THAT CERTAIN DEED TO THE SAID PARCEL, OR BY AND THROUGH ITS STATE HIGHWAY COMMISSION, RECORDED JUNE 17, 1946 IN BOOK 186, PAGE 147, CLATSOP COUNTY RECORDS, THE SAID PARCEL, BEING DESCRIBED AS FOLLOWS:

BEGINNING ON THE WEST LINE OF SAID SOUTHEAST QUARTER OF NORTHWEST QUARTER AT A POINT DIRECTLY EAST OF THE SOUTH LINE OF THIRD STREET OF THE PLAT OF SYLVAN PARK;

THENCE EAST 50 FEET, MORE OR LESS, TO A LINE WHICH IS PARALLEL TO AND 70 FEET EASTERLY OF THE CENTERLINE OF THE RELOCATED OREGON COAST HIGHWAY AND THE TRUE POINT OF BEGINNING;

THENCE CONTINUING EAST 350 FEET, MORE OR LESS, TO THE MOST EASTERLY SOUTHEAST CORNER OF SAID PROPERTY;

THENCE NORTH ALONG THE EASTERLY LINE OF SAID PROPERTY 480 FEET TO THE MOST EASTERLY NORTHEAST CORNER OF SAID PROPERTY;

THENCE WEST 325 FEET, MORE OR LESS, TO SAID PARALLEL LINE;

THENCE SOUTHERLY PARALLEL TO AND 70 FEET EASTERLY OF SAID CENTERLINE TO THE POINT OF BEGINNING.

# SURVEY



# UQU-20001

## Quarter Post Top



37w LED  
5121 Lumens

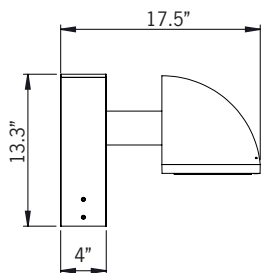
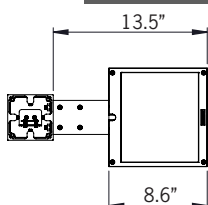
IP65  
Suitable for wet locations

IK08  
Impact Resistant [Vandal Resistant]

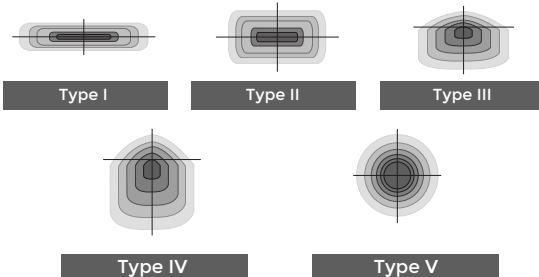
EPA - Contact Factory

Weight - 17.6 lbs

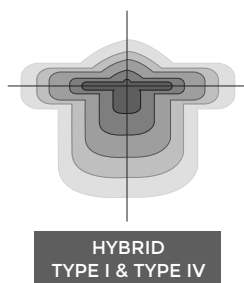
POLE NOT INCLUDED



Ligman's micro Variable Optical System provides the ability to interchange, mix & rotate optics to provide specific light distributions for optimized spacing and uniformity.



The variable optic system allows for the designer to create hybrid distributions for precise lighting requirements.



### Construction

#### Aluminum

Less than 0.1% copper content - Marine Grade 6060 extruded & LM6 Aluminum High Pressure die casting provides excellent mechanical strength, clean detailed product lines and excellent heat dissipation.

#### Pre paint

8 step degrease and phosphate process that includes deoxidizing and etching as well as a zinc and nickel phosphate process before product painting.

#### Memory Retentive -Silicon Gasket

Provided with special injection molded "fit for purpose" long life high temperature memory retentive silicon gaskets. Maintains the gaskets exact profile and seal over years of use and compression.

#### Thermal management

LM6 Aluminum is used for its excellent mechanical strength and thermal dissipation properties in low and high ambient temperatures. The superior thermal heat sink design by Ligman used in conjunction with the driver, controls thermals below critical temperature range to ensure maximum luminous flux output, as well as providing long LED service life and ensuring less than 10% lumen depreciation at 50,000 hours.

#### Surge Suppression

Standard 10kv surge suppressor provided with all fixtures.

#### BUG Rating

Contact Factory

#### Finishing

All Ligman products go through an extensive finishing process that includes fettling to improve paint adherence.

#### Paint

UV Stabilized 4.9Mil thick powder coat paint and baked at 200 Deg C. This process ensures that Ligman products can withstand harsh environments. Rated for use in natatoriums.

#### Inspired by Nature Finishes

The Inspired by nature Finishing is a unique system of decorative powder coating. Our metal decoration process can easily transform the appearance of metal or aluminum product into a wood grain finish.

This patented technology enables the simulation of wood grain, and even marble or granite finish through the use of decorative powder coating.

The wood grain finish is so realistic that it's almost undistinguishable from real wood, even from a close visual inspection. The system of coating permeates the entire thickness of the coat and as a result, the coating cannot be removed by normal rubbing, chipping, or scratching.

#### The Coating Process

After pre-treatment the prepared parts are powder coated with a specially formulated polyurethane powder. This powder provides protection against wear, abrasion, impact and corrosion and acts as the relief base color for the finalized metal decoration.

The component is then wrapped with a sheet of non-porous film with the selected decoration pattern printed on it using special high temperature inks.

This printed film transfer is vacuum-sealed to the surface for a complete thermo print and then transferred into a customized oven. The oven transforms the ink into different forms within the paint layer before it becomes solid. Finally, the film is removed, and a vivid timber look on aluminum remains.

Wood grain coating can create beautiful wood-looking products of any sort. There are over 300 combinations of designs currently in use. Wood grains can be made with different colors, designs, etc.

Our powder coatings are certified for indoor and outdoor applications and are backed by a comprehensive warranty. These coatings rise to the highest conceivable standard of performance excellence and design innovation.

#### Added Benefits

- Resistance to salt-acid room, accelerated aging
- Boiling water, lime and condensed water resistant
- Anti-Graffiti, Anti-Slip, Anti-Microbial, Anti-Scratch
- Super durable (UV resistant)
- TGIC free (non-toxic)

#### Hardware

Provided Hardware is Marine grade 316 Stainless steel.

#### Anti Seize Screw Holes

Tapped holes are infused with a special anti seize compound designed to prevent seizure of threaded connections, due to electrolysis from heat, corrosive atmospheres and moisture.

#### Crystal Clear Low Iron Glass Lens

Provided with tempered, impact resistant crystal clear low iron glass ensuring no green glass tinge.

#### Optics & LED

Precise optic design provides exceptional light control and precise distribution of light.  
LED CRI > 80

#### Lumen - Maintenance Life

L80 /B10 at 50,000 hours (This means that at least 90% of the LED still achieve 80% of their original flux)

**Modern, contemporary post top**  
**Beautiful modern urban post top in either single or twin arm configuration, offering powerful street lighting and beam performance choices.**

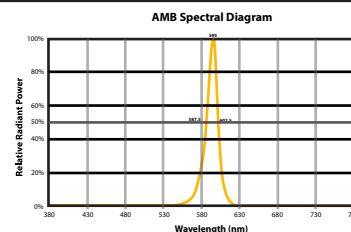
A modern style die-cast aluminum post top decorative quarter cylindrical luminaire with excellent downward light distribution that complies with dark sky requirements. Outstanding visual appeal and precision optical system gives very low glare rating, whilst reducing light pollution. This luminaire is available in two configurations, namely a single or double arm option to suit aesthetic design requirements.

Color temperature 2700K, 3000K, 3500K and 4000K, LED CRI >80 and life time 50,000 Hours. Stainless steel screws. Durable silicone rubber gasket and clear tempered glass. Powder paint with high corrosion resistance with chemical chromatised protection. Integral control gear. Customer specific wattages can be provided, please contact the factory for more information.

Available with a selection of dimmable integral electronic drivers, as well as a provision to install wireless lighting controls to integrate with building management systems. assembly.

To meet International Dark Sky criteria, 3000k or warmer LEDs must be selected.

### CITY OF FLAGSTAFF & TURTLE FRIENDLY COMPLIANT



#### Narrow-Spectrum Amber LEDs

Peak wavelength between 585 & 595 nanometers and a full width of 50% power no greater than 15 nanometers.



# UQU-20001

## Quarter Post Top

<b>PROJECT</b>					<b>DATE</b>	
<b>QUANTITY</b>		<b>TYPE</b>		<b>NOTE</b>		

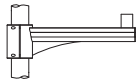
ORDERING EXAMPLE || UQU - 20001 - 37w - T2 - W30 - 02 - 120/277v - Options

<b>UQU-20001</b>					
	<b>LAMP</b>	<b>BEAM</b>	<b>LED COLOR</b>	<b>FINISH COLOR</b>	<b>VOLTAGE</b>
	<b>37w LED</b> 5121 Lumens	T1 - Type I Distribution T2 - Type II Distribution <b>T3 - Type III Distribution</b> T4 - Type IV Distribution T5 - Type V Distribution ME - Type ME Distribution	W27 - 2700K <b>W30 - 3000K</b> W35 - 3500K W40 - 4000K	<b>01 - BLACK RAL 9011</b> 02 - DARK GREY RAL 7043 03 - WHITE RAL 9003 04 - METALLIC SILVER RAL 9006 05 - MATTE SILVER RAL 9006 06 - LIGMAN BRONZE 07 - CUSTOM RAL	<b>120/277v</b> Other - Specify

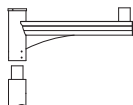
<b>ADDITIONAL OPTIONS</b>		

**DIM - 0-10v Dimming**  
 NAT - Natatorium Rated  
 A20491 - Root Mount Kit

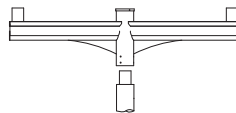
AMB Turtle Friendly Amber LED  
 OS - Occupancy Sensor



A20176  
Aluminum Arm Pole Clamp



A20276  
Aluminum Single Arm



A20376  
Aluminum Double Arm

**INSPIRED BY NATURE FINISHES**

SW01 - OAK FINISH	
SW02 - WALNUT FINISH	
SW03 - PINE FINISH	
DF - DOUGLAS FIR FINISH	
CW - CHERRY WOOD FINISH	
NW - NATIONAL WALNUT FINISH	
SU01 - CONCRETE FINISH	
SU02 - SOFTSCAPE FINISH	
SU03 - STONE FINISH	
SU04 - CORTEN FINISH	

THERE IS AN ADDITIONAL  
COST FOR THESE FINISHES

## More Custom Finishes Available Upon Request

Consult factory for pricing and lead times

Oak	Walnut	Pine	Cherry	Beech	Carbon
Walnut	Pine	Cherry	Beech	Carbon	Galvanized
Pine	Cherry	Beech	Carbon	Galvanized	Steel
Mahogany	Birch	Steel			





# Quarter Product Family



Quarter 1

- UQU-31344-37w-5121lm
- UQU-31392-53w-7178lm



Quarter 2

- UQU-31401-75w-7178lm
- UQU-31402-103w-13183lm



Quarter 1

- UQU-20001-37w-5121lm
- UQU-20002-53w-7171lm
- UQU-20011-2x37w-2x5121lm
- UQU-20012-2x53w-7171lm



Quarter 2

- UQU-20021-53w-6955lm
- UQU-20022-75w-10079lm
- UQU-20031-2x53w-2x6955lm
- UQU-20032-2x75w-2x10079lm

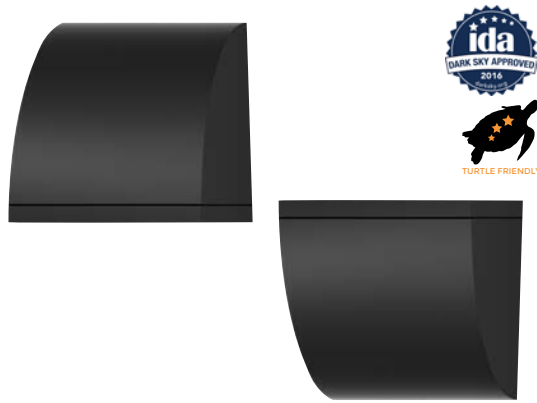


# UQU-31343

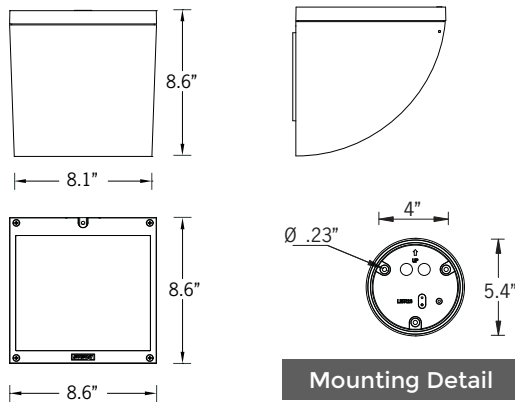
## Quarter 1 Surface

microVos  
TECHNOLOGY

LIGMAN  
LIGHTING USA



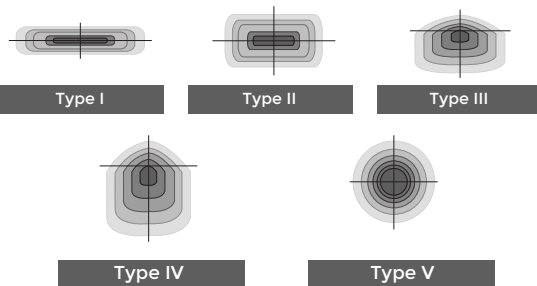
37w LED 5121 Lumens | 53w LED 7178 Lumens  
IP65 • Suitable For Wet Locations  
IK08 • Impact Resistant (Vandal Resistant)  
Weight 6.8 lbs



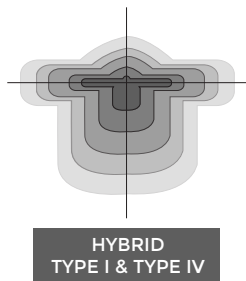
Mounting Detail

microVos  
TECHNOLOGY

Ligman's micro Variable Optical System provides the ability to interchange, mix & rotate optics to provide specific light distributions for optimized spacing and uniformity.



The variable optic system allows for the designer to create hybrid distributions for precise lighting requirements.



HYBRID  
TYPE I & TYPE IV

### Construction

#### Aluminum

Less than 0.1% copper content - Marine Grade 6060 extruded & LM6 Aluminum High Pressure die casting provides excellent mechanical strength, clean detailed product lines and excellent heat dissipation.

#### Pre paint

8 step degrease and phosphate process that includes deoxidizing and etching as well as a zinc and nickel phosphate process before product painting.

#### Memory Retentive -Silicon Gasket

Provided with special injection molded "fit for purpose" long life high temperature memory retentive silicon gaskets. Maintains the gaskets exact profile and seal over years of use and compression.

#### Thermal management

LM6 Aluminum is used for its excellent mechanical strength and thermal dissipation properties in low and high ambient temperatures. The superior thermal heat sink design by Ligman used in conjunction with the driver, controls thermals below critical temperature range to ensure maximum luminous flux output, as well as providing long LED service life and ensuring less than 10% lumen depreciation at 50,000 hours.

#### Surge Suppression

Standard 10kv surge suppressor provided with all fixtures.

#### BUG Rating

B1 - U0 - G1

#### Finishing

All Ligman products go through an extensive finishing process that includes fettling to improve paint adherence.

#### Paint

UV Stabilized 4.9Mil thick powder coat paint and baked at 200 Deg C. This process ensures that Ligman products can withstand harsh environments. Rated for use in natatoriums.

#### Inspired by Nature Finishes

The Inspired by nature Finishing is a unique system of decorative powder coating. Our metal decoration process can easily transform the appearance of metal or aluminum product into a wood grain finish.

This patented technology enables the simulation of wood grain, and even marble or granite finish through the use of decorative powder coating.

The wood grain finish is so realistic that it's almost undistinguishable from real wood, even from a close visual inspection. The system of coating permeates the entire thickness of the coat and as a result, the coating cannot be removed by normal rubbing, chipping, or scratching.

#### The Coating Process

After pre-treatment the prepared parts are powder coated with a specially formulated polyurethane powder. This powder provides protection against wear, abrasion, impact and corrosion and acts as the relief base color for the finalized metal decoration.

The component is then wrapped with a sheet of non-porous film with the selected decoration pattern printed on it using special high temperature inks.

This printed film transfer is vacuum-sealed to the surface for a complete thermo print and then transferred into a customized oven. The oven transforms the ink into different forms within the paint layer before it becomes solid. Finally, the film is removed, and a vivid timber look on aluminum remains.

Wood grain coating can create beautiful wood-looking products of any sort. There are over 300 combinations of designs currently in use. Wood grains can be made with different colors, designs, etc.

Our powder coatings are certified for indoor and outdoor applications and are backed by a comprehensive warranty. These coatings rise to the highest conceivable standard of performance excellence and design innovation.

#### Added Benefits

- Resistance to salt-acid room, accelerated aging
- Boiling water, lime and condensed water resistant
- Anti-Graffiti, Anti-Slip, Anti-Microbial, Anti-Scratch
- Super durable (UV resistant)
- TGIC free (non-toxic)

#### Hardware

Provided Hardware is Marine grade 316 Stainless steel.

#### Anti Seize Screw Holes

Tapped holes are infused with a special anti seize compound designed to prevent seizure of threaded connections, due to electrolysis from heat, corrosive atmospheres and moisture.

#### Crystal Clear Low Iron Glass Lens

Provided with tempered, impact resistant crystal clear low iron glass ensuring no green glass tinge.

#### Optics & LED

Precise optic design provides exceptional light control and precise distribution of light. LED CRI > 80

#### Lumen - Maintenance Life

L80 /B10 at 50,000 hours (This means that at least 90% of the LED still achieve 80% of their original flux)

**Rounded profile wall-mounted area downlight. Classic and practical profile affording wildlife and dirt resistant urban area lighting solutions.**

A small size quarter-cylindrical wall mounted luminaire with a selection of precision optics providing type I, II, III, IV & V light distributions for optimum spacing and perfect uniformity between light fixtures.

This light fixture has vandal proof tempered glass with specially designed silicon gaskets that allow the fixture to be mounted as an uplight, as well as downlight configurations.

Installation is made easy with a die cast aluminum wall mount casting, that is attached to the wall before securing the fixture with a single vandal resistant screw.

The lens is available in clear or lightly frosted options to suit customer requirements. Designed for the illumination of entrances, terraces, corridors and building facades. For mounting in upward or downward positions.

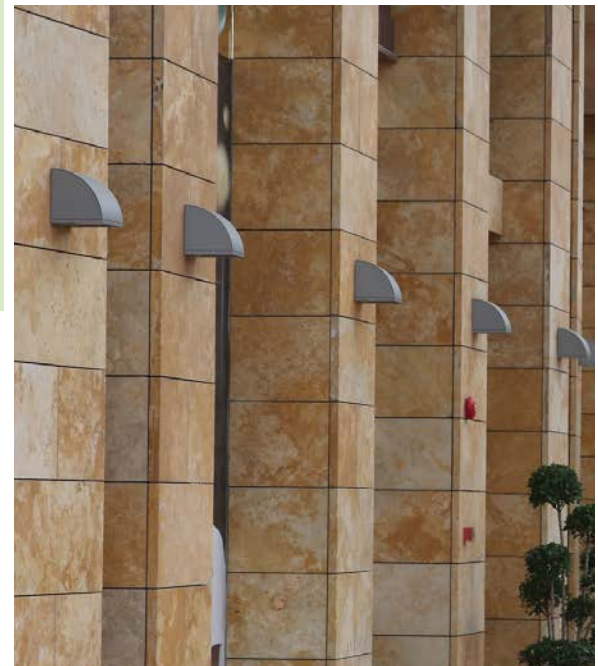
To meet International Dark Sky criteria, 3000k or warmer LEDs must be selected and luminaire fix mounted (+/- 15° allowable to permit leveling).

### Additional Options (Consult Factory For Pricing)



### SCDT Surface Conduit Decorative Trim

NOTE: This decorative trim does not function as a junction box. Wire connections should be made inside the luminaire





# UQU-31343

Quarter 1 Surface



PROJECT					DATE	
QUANTITY		TYPE		NOTE		

ORDERING EXAMPLE || UQU - 31343 - 37w - T2 - W30 - 02 - 120/277v - Options

UQU-31343					
LAMP	BEAM	LED COLOR	FINISH COLOR	VOLTAGE	
<div>37w LED</div> 5121 Lumens	<div>M - Medium Beam 30°</div> <div>W - Wide Beam 56°</div> <div>EW - Extra Wide Beam 112°</div> <div>T1 - Type I Distribution</div> <div>T2 - Type II Distribution</div> <div>T3 - Type III Distribution</div> <div>T4 - Type IV Distribution</div> <div>ME - Type ME Distribution</div>	<div>W27 - 2700K</div> <div>W30 - 3000K</div> <div>W35 - 3500K</div> <div>W40 - 4000K</div>	<div>01 - BLACK RAL 9011</div> 02 - DARK GREY RAL 7043 03 - WHITE RAL 9003 04 - METALLIC SILVER RAL 9006 05 - MATTE SILVER RAL 9006 06 - LIGMAN BRONZE 07 - CUSTOM RAL	<div>120/277v</div> Other - Specify	
<div>53w LED</div> 7178 Lumens			<div>INSPIRED BY NATURE FINISHES</div> <div>SW01 - OAK FINISH</div> <div>SW02 - WALNUT FINISH</div> <div>SW03 - PINE FINISH</div> <div>DF - DOUGLAS FIR FINISH</div> <div>CW - CHERRY WOOD FINISH</div> <div>NW - NATIONAL WALNUT FINISH</div> <div>SU01 - CONCRETE FINISH</div> <div>SU02 - SOFTSCAPE FINISH</div> <div>SU03 - STONE FINISH</div> <div>SU04 - CORTEN FINISH</div>	THERE IS AN ADDITIONAL COST FOR THESE FINISHES	

ADDITIONAL OPTIONS		

- NAT - Natatorium Rated

DIM - 0-10v Dimming

SCDT - Surface Conduit Decorative Trim
- F - Frosted Lens

EMG - Emergency Battery Pack

AMB - Turtle Friendly Amber LED

## More Custom Finishes Available Upon Request

Consult factory for pricing and lead times





# Quarter Product Family



Quarter 1

- UQU-31343-37w-5121lm
- UQU-31343-53w-7178lm



Quarter 2

- UQU-31401-53w-6955lm
- UQU-31401-75w-10079lm



Quarter 1

- UQU-20001-37w-5121lm
- UQU-20002-53w-7171lm
- UQU-20011-2x37w-2x5121lm
- UQU-20012-2x53w-7171lm



Quarter 2

- UQU-20021-53w-6955lm
- UQU-20022-75w-10079lm
- UQU-20031-2x53w-2x6955lm
- UQU-20032-2x75w-2x10079lm



Project Name:

Type:

Quantity:

## TYPE D - SIGNAGE LIGHTING

### FIXTURE SPECIFICATIONS

#### INTENDED USE

Our outdoor architectural specification-grade linear wall-mounted light showcases signs or works of art. The fixture comes with an option to extend the length for lighting wider wall areas. Constant and evenly distributed illumination from beginning to the end of runs adds value to commercial or residential settings. Made in America.

#### FEATURES

**Construction:** Extruded aluminum

**CRI:** 90+

**Driver:** Remote IP68-rated universal driver capable of 0-10V, MLV, ELV, TRIAC dimming to 1%.

**Voltage:** LED 24VDC & driver 120-277V

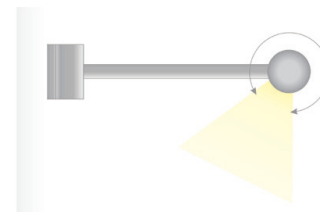
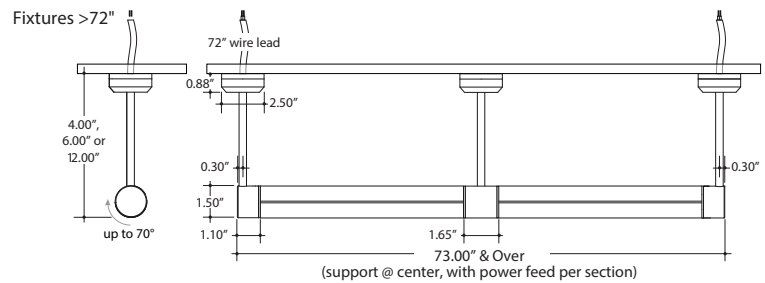
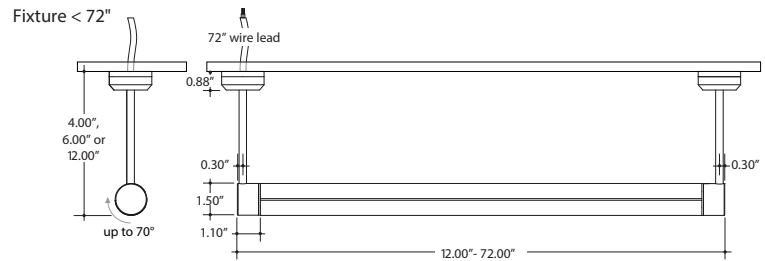
**Average Life:** 50,000 hours

**Warranty:** 5 years carefree for parts & components (Labor not included)

**Listings:** cULus, Made in the USA



#### Profile Dimensions



Fixture Head Rotates 70°

### ORDERING INFORMATION Example: (11704-24-4L-27K-6-SA-FR-ND)

Model	Length	Lumen per foot	Color Temp	Arm Length	Finish <sup>2</sup>	Lens	Remote Driver
11704	24 2'	4L 421 lumen	27K 2700K	4 4"	SA Silver	FR Frosted <sup>Standard</sup>	UNI 120-277V Universal (0-10V/MLV/TRIAC 1% Dimming)
	36 3'	5L 565 lumen	30K 3000K	6 6"	WH White	CL Clear	
	48 4'		35K 3500K	12 12"	BK Black		
	72 <sup>1</sup> 6'		40K 4000K		BZ Bronze		
	96 <sup>1</sup> 8'				AB Aged Brass		
	XX <sup>1</sup> Custom				PG Polished Gold		
					CH Chrome		
					NI Nickel		
					MBK Matte Black		

<sup>1</sup> Fixtures over 72" consist of 2 fixtures, each requiring its own driver.

<sup>2</sup> Extended lead times will apply on all finishes other than silver.

<sup>3</sup> Polished Gold finishes have a maximum fixture length of 48", and Chrome finishes have a maximum fixture length of 72".



## WATTAGE

## 4L Wattage

Nominal Length (in)	Actual Length	Watts	Nominal Length (in)	Actual Length	Watts
12	11 6/16	10.4	47	46 8/16	34.7
13	12 12/16	10.4	48	47 15/16	35.3
14	---	---	49	---	---
15	14 3/16	10.4	50	49 5/16	36.0
16	15 9/16	11.3	51	50 12/16	37.4
17	17	12.1	52	---	---
18	---	---	53	52 2/16	38.1
19	18 6/16	12.9	54	53 9/16	39.5
20	19 13/16	14.5	55	54 15/16	40.2
21	---	---	56	---	---
22	21 3/16	15.3	57	56 6/16	40.9
23	22 10/16	16.9	58	57 12/16	42.3
24	---	---	59	---	---
25	24	17.7	60	59 3/16	43.0
26	25 7/16	18.5	61	60 9/16	44.4
27	26 13/16	20.2	62	62	45.1
28	---	---	63	---	---
29	28 4/16	20.9	64	63 6/16	45.8
30	29 10/16	22.4	65	64 13/16	47.0
31	---	---	66	---	---
32	31 1/16	23.2	67	66 3/16	47.6
33	32 7/16	24.7	68	67 10/16	48.7
34	33 14/16	25.4	69	---	---
35	---	---	70	69	49.3
36	35 4/16	26.2	71	70 7/16	49.9
37	36 11/16	27.7	72	71 13/16	51.1
38	---	---			
39	38 1/16	28.4			
40	39 8/16	29.9			
41	40 14/16	30.5			
42	---	---			
43	42 5/16	31.2			
44	43 11/16	32.6			
45	---	---			
46	45 2/16	33.3			

## 5L Wattage

Nominal Length (in)	Actual Length	Watts	Nominal Length (in)	Actual Length	Watts
12	10 8/16	9.7	47	46 13/16	35.1
13	12	9.7	48	---	---
14	13 8/16	9.7	49	48 6/16	35.9
15	---	---	50	49 14/16	37.6
16	15 1/16	9.7	51	---	---
17	16 9/16	11.3	52	51 6/16	38.4
18	---	---	53	52 14/16	40.2
19	18 1/16	12.1	54	---	---
20	19 9/16	13.6	55	54 7/16	41.1
21	---	---	56	55 15/16	42.9
22	21 2/16	14.4	57	---	---
23	22 10/16	16.0	58	57 7/16	43.8
24	---	---	59	58 15/16	45.5
25	24 2/16	16.8	60	---	---
26	25 10/16	18.3	61	60 7/16	47.3
27	---	---	62	62	48.2
28	27 2/16	19.1	63	---	---
29	28 11/16	20.7	64	63 8/16	50.0
30	---	---	65	---	---
31	30 3/16	21.4	66	65	50.8
32	31 11/16	23.0	67	66 8/16	52.5
33	---	---	68	---	---
34	33 3/16	23.8	69	68 1/16	53.4
35	34 12/16	25.3	70	69 9/16	55.1
36	---	---	71	---	---
37	36 4/16	26.1	72	71 1/16	55.9
38	37 12/16	27.6			
39	---	---			
40	39 4/16	28.4			
41	40 13/16	30.1			
42	---	---			
43	42 5/16	30.9			
44	43 13/16	32.6			
45	---	---			
46	45 5/16	33.4			



FINISH

Silver



Black



Aged Brass



Nickle



Bronze



Polished Gold



Chrome



Matte Black

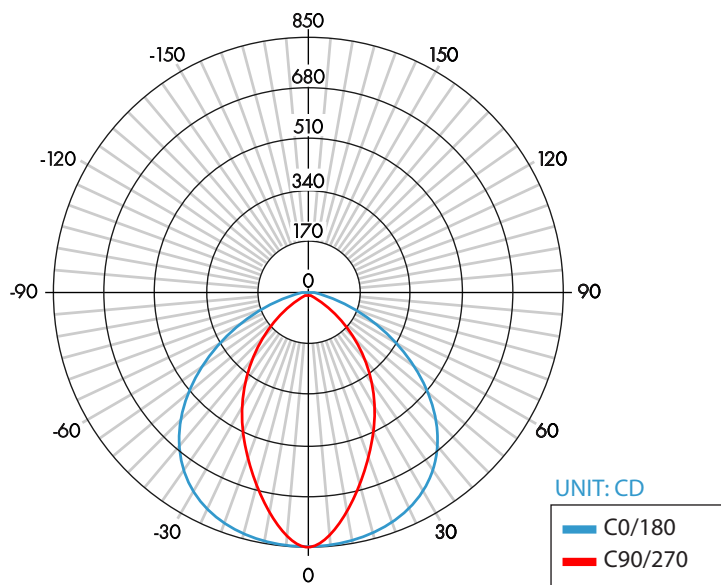


White





## Photometry



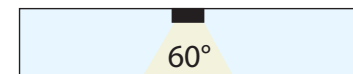
## 11704-48-4L-40K-4-SA-XX

### Zonal Lumen Summary 4000K

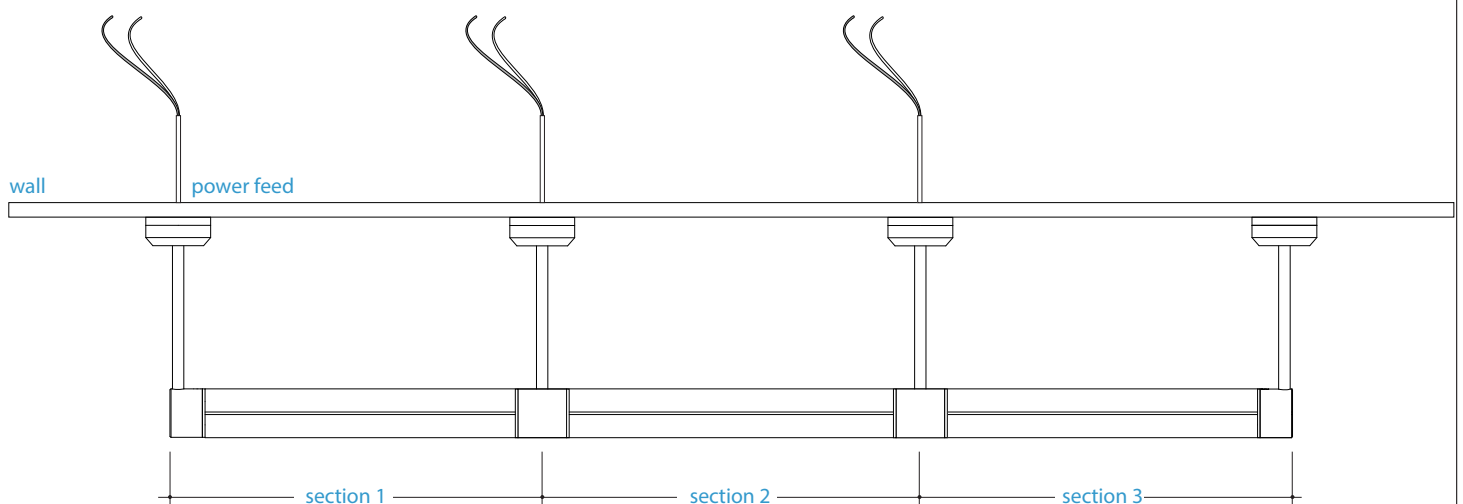
Zone	Lumen	% Fixture
0-30	582	35%
0-40	892	54%
0-60	1393	85%
0-90	1625	99%
0-180	1641	100%

Total

### Beam Angle



## Sample System Layout





## COLOR TEMPERATURE GUIDE

2700K	3000K	3500K	4000K	5000K
WARM WHITE	SOFT WHITE GLOW	NEUTRAL GLOW	DAYLIGHT GLOW	CRYSTAL WHITE GLOW
friendly personal intimate	soft warm pleasing	sociable inviting non-threatening	neat clean efficient	bright cool alert
HOMES LIBRARIES RESTAURANTS	HOMES HOTEL ROOMS LOBBIES RETAIL STORES	EXECUTIVE OFFICES RECEPTION AREAS SUPERMARKETS	OFFICES CLASSROOMS MASS MERCHANTISERS SHOWROOMS	GRAPHICS INDUSTRY HOSPITALS GALLERIES BEAUTY SALONS
✓	✓	✓	✓	✗



## LADOR 9 (LD-80001)



### Product description

Integral control gear - 62x62 mm - Class I



**CANNON BEACH - POLICE STATION**  
**QUANTITY: 17**  
**TYPE: H**  
**CATALOG NUMBER: LD-80001-VW-01**

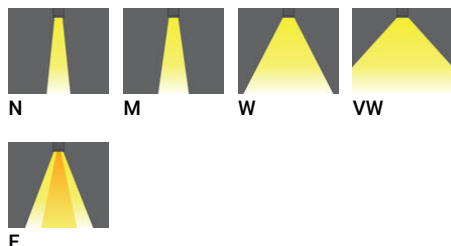
### Luminaire Structure

- Die-cast aluminium housing
- Pre-treated before powder coating ensuring high corrosion resistance
- Single cable entry
- One cable gland supplied with 0.2 m of 3x1.0 sqmm outdoor cable

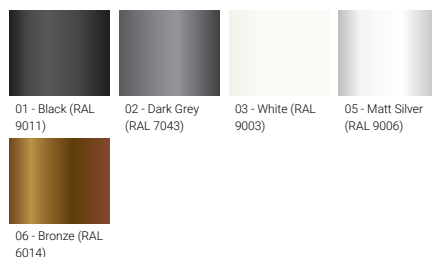
- Stainless steel fasteners in grade 304 with zinc flake coating (ZFC)
- Durable silicone rubber gasket
- Clear toughened glass
- High-efficiency PMMA lens

- Integral control gear

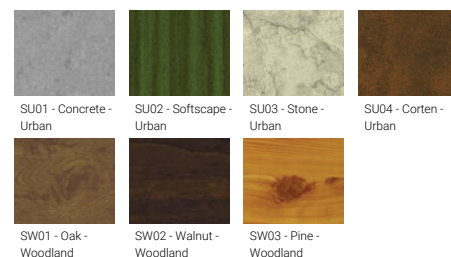
### Optic



### Product colour



### Special finishes upon request



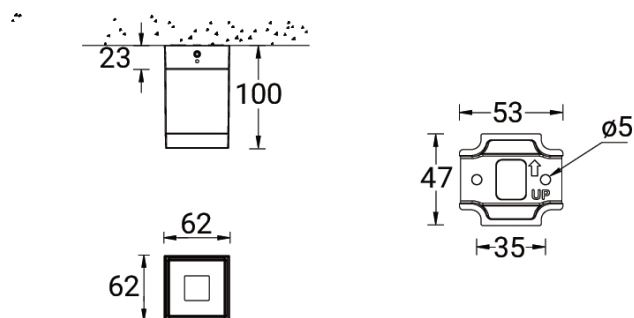


## LADOR 9 (LD-80001)

### Technical information

<b>Material</b>	Aluminium	<b>Optic value</b>	10°, 16°, 32°, 70°, 42°x11°	<b>Operating temperature</b>	-20 °C to 40 °C
<b>Light source</b>	1 LED	<b>CCT / CRI</b>	3000K CRI80, 4000K CRI80	<b>Cable</b>	One cable gland supplied with 0.2 m of 3x1.0 sqmm outdoor cable
<b>Power</b>	3 W	<b>Bug</b>	B0-U0-G0, B1-U0-G0	<b>Through wiring</b>	Single cable entry
<b>Lumen</b>	209 - 262 lm	<b>ULR</b>	0%	<b>Lens / Reflector / Optic</b>	Clear toughened glass, High-efficiency PMMA lens
<b>Efficacy</b>	70 - 87 lm/W	<b>ULOR</b>	0%	<b>MacAdam Ellipse</b>	3 SDCM
<b>Driver option</b>	Integral control gear	<b>CIE flux code n°3</b>	100	<b>Lifetime L90B10 (hours)</b>	> 120,000
<b>Driver</b>	Constant current (CC)	<b>Dimming type</b>	On/Off	<b>Lifetime L80B10 (hours)</b>	> 120,000
<b>Input voltage</b>	220-240 V 50/60 Hz	<b>Product colours</b>	Black, Dark Grey, White, Matt Silver, Bronze, Concrete - Urban, Softscape - Urban, Stone - Urban, Corten - Urban, Oak - Woodland, Walnut - Woodland, Pine - Woodland	<b>Lifetime L80B50 (hours)</b>	> 120,000
<b>Optic</b>	N, M, W, VW, E				
		<b>Weight</b>	0.7 kg		

### LD-80001

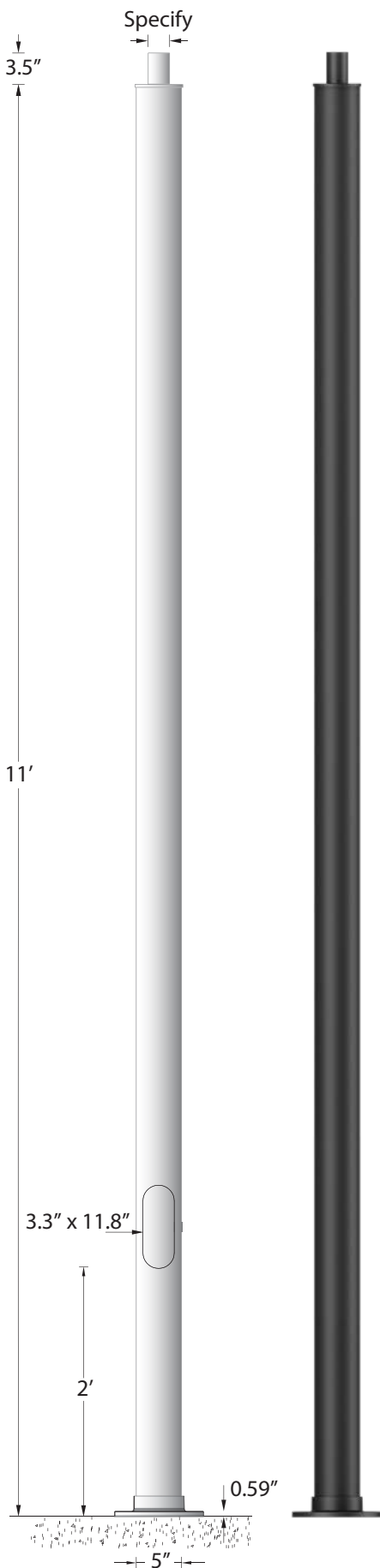




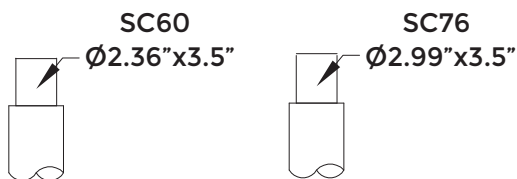
# APD-RSA-5018-11'-5" DIA - .188"

## Round Straight Aluminum Pole

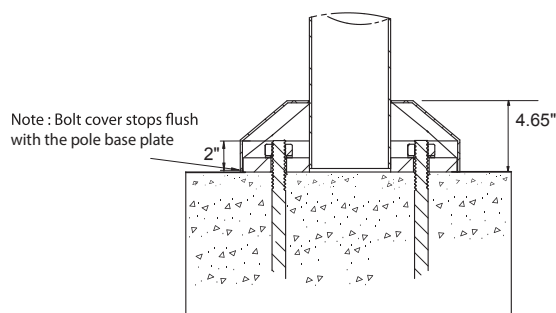
**LIGMAN**  
LIGHTING USA



### Tenon Post Top



### Pole Mount Install Notes



A level concrete base is poured and finished flush. This provides a uniform load displacement pad for the forces created by wind and luminaire weight

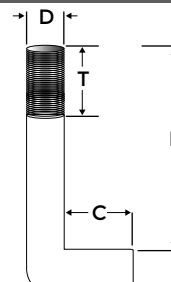
Failing to do this voids pole warranty  
Foundation and Design by Others

### Physical Data

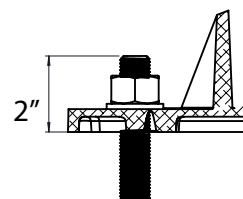
Pole Height: 11'  
Pole Diameter: 5"  
Thickness: 0.188"  
Weight: 44.7 lbs

### Anchor Bolt

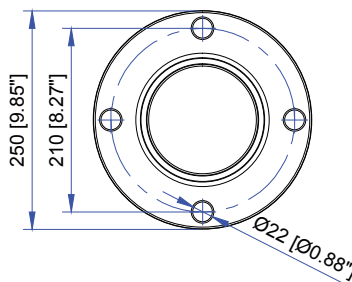
D x L x C x T  
3/4 x 18 x 4 x 6



### Bolt Projection



### Mounting Base



### Not to scale template:

This drawing is being furnished for reference dimensions only and cannot be used as a template to set anchor bolts. Since it is "not to scale" Ligman accepts no responsibility for its intended use. Refer to site plans and specification before installing any anchor bolts.

• Contact Ligman Lighting USA for bolt template prior to pouring anchor bolts.

### Wind Load Map



### Die-Cast Base Cover



### Maximum EPA

MPH	90	100	110	120	130
EPA	15.5	12.0	11.3	9.4	7.8



# APD-RSA-5018-11'-5" DIA - .188"

## Round Straight Aluminum Pole



PROJECT					DATE	
QUANTITY		TYPE		NOTE		

### ORDERING EXAMPLE || APD-RSA-5018-11'-5" DIA .188"-SC60-02-Options

TENON	FINISH COLOR	ADDITIONAL OPTIONS - CONSULT FACTORY FOR PRICING			
SC60 - 2.36" x 3.5" Tenon SC76 - 2.99" x 3.5" Tenon	01 - BLACK RAL 9011 02 - DARK GREY RAL 7043 03 - WHITE RAL 9003 04 - METALLIC SILVER RAL 9006 05 - MATTE SILVER RAL 9006 06 - BRONZE RAL 6014 07 - CUSTOM RAL	A20581 - Single Banner Arm A20681 - Double Banner Arm GFCI - GFCI Box 1LS - 1.5mm [1/16"] Leveling Shim [Enter Quantity] 3LS - 3mm [1/8"] Leveling Shim [Enter Quantity]			
INSPIRED BY NATURE FINISHES SW01 - OAK FINISH SW02 - WALNUT FINISH SW03- PINE FINISH DF - DOUGLAS FIR FINISH CW - CHERRY WOOD FINISH NW - NATIONAL WALNUT FINISH SU01 - CONCRETE FINISH SU02 - SOFTSCAPE FINISH SU03 - STONE FINISH SU04 - CORTEN FINISH		 LS Leveling Shim  A20581 Single Banner Arm  A20681 Double Banner Arm  GFCI GFCI Box			
THERE IS AN ADDITIONAL COST FOR THESE FINISHES		Banner arms are designed with a safety break-away at the clamp with an internal safety wire that prevents the arm from falling to the ground. It is important to calculate the additional EPA loading on the pole based on the size and quantity of banners. Adding banners will affect the EPA of the pole and should be taken into consideration before installing. Incorrect pole loading of any type voids pole warranty.			

#### Inspired by Nature Finishes

The Inspired by nature Finishing is a unique system of decorative powder coating. Our metal decoration process can easily transform the appearance of metal or aluminum product into a wood grain finish.

This patented technology enables the simulation of wood grain, and even marble or granite finish through the use of decorative powder coating.

The wood grain finish is so realistic that it's almost undistinguishable from real wood, even from a close visual inspection. The system of coating permeates the entire thickness of the coat and as a result, the coating cannot be removed by normal rubbing, chipping, or scratching.

#### The Coating Process

After pre-treatment the prepared parts are powder coated with a specially formulated polyurethane powder. This powder provides protection against wear, abrasion, impact and corrosion and acts as the relief base color for the finalized metal decoration.

The component is then wrapped with a sheet of non-porous film with the selected decoration pattern printed on it using special high temperature inks.

This printed film transfer is vacuum-sealed to the surface for a complete thermo print and then transferred into a customized oven. The oven transforms the ink into different forms within the paint layer before it becomes solid. Finally, the film is removed, and a vivid timber look on aluminum remains.

Wood grain coating can create beautiful wood-looking products of any sort. There are over 300 combinations of designs currently in use. Wood grains can be made with different colors, designs, etc.

Our powder coatings are certified for indoor and outdoor applications and are backed by a comprehensive warranty. These coatings rise to the highest conceivable standard of performance excellence and design innovation.

#### Added Benefits

- Resistance to salt-acid room, accelerated aging
- Boiling water, lime and condensed water resistant
- Anti-Graffiti, Anti-Slip, Anti-Microbial, Anti-Scratch
- Super durable (UV resistant)
- TGIC free (non-toxic)

### More Custom Finishes Available Upon Request

Consult factory for pricing and lead times

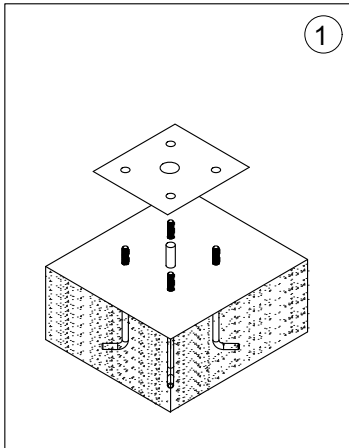
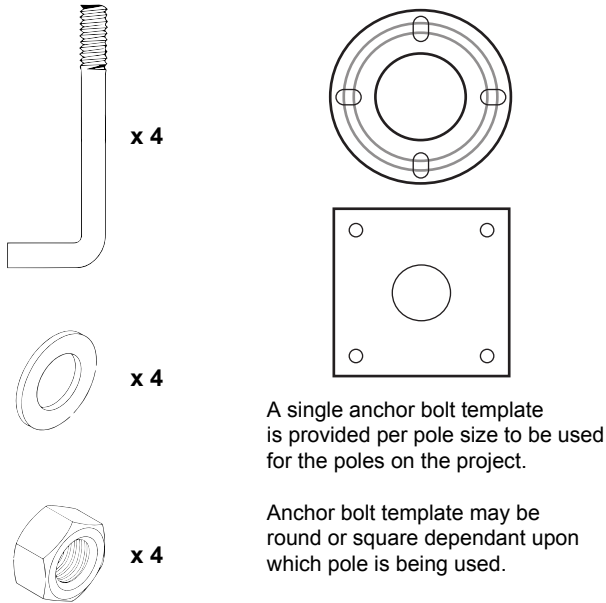


Example: Inspired by Nature Finish



## Anchor Bolt Installation for Poles

### What's Included Per Pole



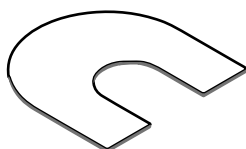
Use anchor bolt template to set anchor bolts into concrete as per civil engineering instructions.

**Ligman does not provide foundation details. A local engineer that is familiar with the site soil conditions should provide this information.**

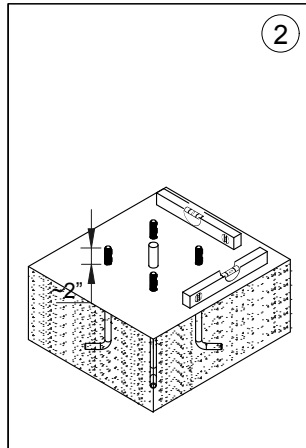
#### NOTE:

Ligman does not recommend using leveling bolts for pole installations.

Leveling shims can be provided, contact Ligman for more information.

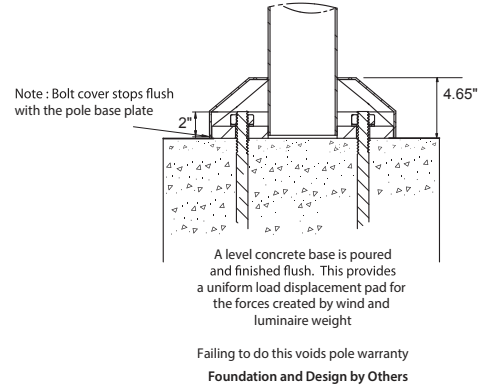


Leveling Shim Example



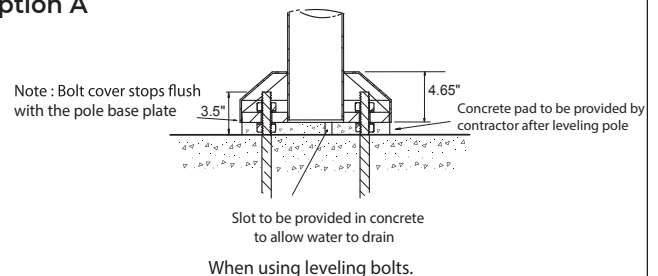
Ensure that the concrete is plumb using a level. Failing to do this will result in pole being uneven or tilted.

### Preferred Pole Installation



In rare instances where leveling bolts have to be used, it is important that a flush concrete surface is created to mount the pole base plate.  
**NOTE: When using leveling bolts, bolt projection should be 3.5"**

### Using Leveling Bolts Option A

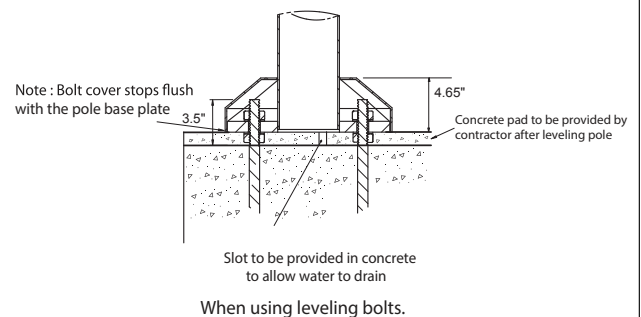


After establishing a level platform the space between the original concrete surface and the pole base should be filled with concrete and finished flush.

This provides a uniform load displacement pad for the forces created by wind and luminaire weight

Foundation and Design by Others

### Using Leveling Bolts Option B



After establishing a level platform the space between the original concrete surface and the pole base should be filled with concrete and finished flush.

This provides a uniform load displacement pad for the forces created by wind and luminaire weight